

**A TRUST-LED HUMAN CONNECTION
APPROACH TO PREVENTION**



TABLE OF CONTENTS

FRONT MATTER

1. Intellectual Property Notice
2. Methodological Protection Statement
3. Protected Methodological Claim
4. Foreword
5. Abstract
6. Keywords
7. Core Proposition
8. Methodological Architecture
9. Figures and Models
10. Executive Summary

PART 1: ORIGINS — BRINGING BACK THE COMMUNITY (2018–2021)

- 1.1 Introduction
- 1.2 The Problem We Observed
- 1.3 Establishing Headlinerz Barbershop
- 1.4 The Human Connection Discovery
- 1.5 Experimenting with Intentional Listening
- 1.6 The First Major Insight

PART 2: TRUST FORMATION — BUILDING ON EXISTING TRUST (2021–2025)

- 2.1 Introduction
- 2.2 The Discovery of the Trusted Space
- 2.3 Understanding the Role of Trust
- 2.4 The Barber–Client Relationship
- 2.5 The Decision to Build on Existing Trust
- 2.6 The Introduction of Thursday Night Jollof with Jesse d Barber™
- 2.7 The Role of Food
- 2.8 The Power of Repeated Exposure

2.9 The Impact of the Pandemic

2.10 The Second Major Insight

PART 3: THE TRUST ACCUMULATION MODEL™

3.1 Introduction

3.2 Trust as a Dynamic Asset

3.3 The Seven Stages

3.4 Neuroscientific Alignment

3.5 The Core Insight

PART 3A: TRUST STEWARDSHIP™ — CONVERTING SUITABLE TRUST INTO PREVENTION

3A.1 Introduction

3A.2 The Emergence of Trust Stewardship™

3A.3 Identifying Existing Trust Assets

3A.4 Equipping Trusted Individuals

3A.5 Building a Network of Trust Stewards™

PART 4: JOLLOF NIGHTS™ — THE FIRST STRUCTURED PREVENTION PATHWAY

4.1 Introduction

4.2 Defining a Prevention Pathway

4.3 The Original Model

4.4 The Prevention Mechanism

4.5 Prevention Through Belonging

4.6 Prevention Through Conversation

4.7 Prevention Through Trusted Relationships

4.8 Expansion of the Prevention Pathway

4.9 Illustrative Prevention Example

4.10 Why Jollof Nights™ Matters

4.11 The First Structured Prevention Pathway

PART 5: FROM JOLLOF NIGHTS™ TO JOLLOF NIGHTS CONNECT™

5.1 Introduction

5.2 Looking Beyond the Event

5.3 The Infrastructure Question

5.4 The Realisation

5.5 From Prevention Pathway to Prevention Infrastructure

5.6 The Influence of Human Connection Science

5.7 Defining Jollof Nights Connect™

5.8 A New Proposition

PART 6: JOLLOF NIGHTS CONNECT™ — HUMAN CONNECTION INFRASTRUCTURE FOR PREVENTION™

6.1 Introduction

6.2 Why Infrastructure Matters

6.3 Traditional Prevention vs Trust-Led Prevention™

6.4 The Infrastructure Layers

6.5 Human Connection Before Digital Connection

6.6 The Role of the Digital Layer

6.7 Why This Matters for Health Systems

6.8 Scientific Foundation

6.9 The Core Infrastructure Proposition

6.10 What This Methodology Is Not

6.11 Protected Operational Signature

6.12 Looking Forward

PART 6A: WHAT MAKES THE JOLLOF NIGHTS™ METHODOLOGY DIFFERENT?

6A.1 Introduction

6A.2 Trust Already Exists

6A.3 Beyond Community Engagement

6A.4 Relationships Before Interventions

6A.5 Belonging Before Behaviour Change

6A.6 Conversation Before Signposting

6A.7 Community-Led Agenda Setting

6A.8 Trust as an Asset

6A.9 Universal Human Application

6A.10 The Central Difference

6A.11 Conclusion

PART 7: EVIDENCE BASE AND PROOF OF PRACTICE (2018–PRESENT)

7.1 Introduction

7.2 Expansion Through Trusted Spaces

7.3 External Recognition and Independent Validation

7.4 University Pilots

7.5 Health Outcomes

7.6 Community Intelligence

PART 8: REPLICATION AND LICENSING FRAMEWORK™

8.1 Introduction

8.2 Why Replication Matters

8.3 The Replication Principle™

8.4 What Is Being Replicated?

- 8.5 Protecting Methodological Integrity
- 8.6 The Licensing Framework™
- 8.7 Trust Steward Certification™
- 8.8 Organisational Licensing
- 8.9 Cultural Adaptation Without Methodological Drift
- 8.10 Scaling Through Human Connection Infrastructure™
- 8.11 Conclusion

PART 9: THE SCIENTIFIC FOUNDATIONS OF TRUST

- 9.1 Introduction
- 9.2 Why Neuroscience Matters
- 9.3 *A General Theory of Love* and Human Connection
- 9.4 Attachment Theory
- 9.5 Sense of Community Theory
- 9.6 Social Capital Theory
- 9.7 Salutogenesis and Prevention
- 9.8 Psychological Safety and Human Behaviour
- 9.9 Convergence Between Science and Practice
- 9.10 Future Research Agenda
- 9.11 Conclusion

APPENDICES

- Appendix A — Core Methodological Principles of the Jollof Nights™ Methodology
- Appendix B — Future Research Agenda
- Appendix C — Integrated Architecture of the Jollof Nights™ Methodology
- Appendix D — Operational Systems of the Jollof Nights™ Methodology

Appendix E — Operational Evidence and Intelligence Systems of the Jollof Nights™
Methodology

BACK MATTER

Acknowledgements

Suggested Citation

References

Author's Closing Statement

1. INTELLECTUAL PROPERTY NOTICE

© Ndukauba Ltd. All Rights Reserved.

Jollof Nights™, Jollof Nights Connect™, Trust Accumulation Model™, Trust Activation Principle™, Trust Stewardship™, Human Connection Infrastructure For Prevention™, Human Connection Infrastructure™, and all associated frameworks, methodologies, training systems, evaluation tools, implementation approaches, and branded concepts described within this publication are intellectual property assets developed by Ndukauba Ltd.

This publication may be cited, referenced, and shared for educational, research, policy, and non-commercial purposes with appropriate attribution.

No part of this publication, including its named frameworks, diagrams, training systems, implementation structures, or protected operational architecture, may be reproduced, adapted, commercialised, licensed, taught, commissioned, or materially implemented under the protected names or substantially similar operational structures without prior written permission from Ndukauba Ltd.

Protection applies not only to exact reproduction but also to materially similar operational structures, renamed frameworks, reordered trust pathways, or functionally equivalent trust-led prevention systems that reproduce substantially the same methodological logic.

2. METHODOLOGICAL PROTECTION STATEMENT

The Jollof Nights™ Methodology protects not merely the delivery of sessions, but the structured identification, activation, strengthening, accumulation, stewardship, and organisation of existing trusted human relationships for prevention outcomes across community, institutional, family, and digital environments.

Its protection extends to the operational logic through which trust is intentionally recognised, activated, and converted into earlier conversation, earlier action, and earlier prevention.

The methodology protects both its conceptual architecture and its practical operational sequence.

3. PROTECTED METHODOLOGICAL CLAIM

The Jollof Nights™ Methodology is a proprietary trust-led human connection methodology developed by Ndukauba Ltd for the structured identification, activation,

strengthening, accumulation, stewardship, and organisation of existing trusted human relationships for prevention outcomes.

The methodology consists of five interdependent protected components:

- Trust Accumulation Model™
- Trust Activation Principle™
- Trust Stewardship™
- Jollof Nights™ Prevention Pathway
- Human Connection Infrastructure For Prevention™

These components function as one unified prevention system. They may not be replicated, adapted, commercialised, licensed, delivered, taught, or commissioned under materially similar operational structures without written permission from Ndukauba Ltd.

4. FOREWORD

In 2018, we did not set out to build a health intervention, a programme, or a methodology. We set out to rebuild something simpler and more fundamental: community.

At the time, we were observing a growing disconnection between people who lived alongside one another, shared similar realities, and often carried similar emotional, social, financial, and family pressures, yet lacked trusted environments where those burdens could be spoken about honestly.

Through our work at Headlinerz Barbershop, we began to notice a pattern. People were not necessarily waiting for services; many were waiting for trust. Where trust existed, conversation happened more naturally. Where conversation happened, people disclosed more openly. Where disclosure happened, people became more willing to reflect, seek support, and take action.

Over time, it became clear that trust was doing more than creating conversation. It was creating the conditions for prevention.

As the methodology developed, we found that these practical observations aligned closely with established thinking in neuroscience, attachment theory, and relationship science. In *A General Theory of Love*, Thomas Lewis, Fari Amini, and Richard Lannon argue that human beings are biologically shaped by connection and that the quality of relationships directly influences emotional regulation, behaviour, wellbeing, and resilience.

This provided scientific language for what had already been observed repeatedly in practice: people were not changing simply because they received more information; they were changing because they experienced trusted human connection.

This publication documents the journey that began in a barbershop and evolved into what we now describe as a Trust-Led Human Connection Approach to Prevention. It

reflects years of observation, experimentation, community practice, partnership development, and continuous learning.

At its core is a simple belief: prevention does not always begin in services. In many cases, prevention begins in trusted human relationships.

This document is our contribution to that understanding.

Jesse d Barber (Jesse Ashiegbu)

Founder, Jollof Nights™

Founder, Jollof Nights Connect™

Founder, Ndukauba Ltd

5. ABSTRACT

The Jollof Nights™ Methodology is a trust-led prevention framework built on the principle that trusted human relationships create the conditions for earlier conversation, earlier action, and earlier prevention.

Developed through community practice beginning in 2018, the methodology emerged from observations within Headlinerz Barbershop in South East London, where trusted relationships between barbers and clients repeatedly created opportunities for meaningful disclosure, peer support, belonging, and behavioural change.

Rather than creating new services and asking communities to trust them, the methodology identifies and activates trust that already exists. Through trusted spaces, trusted people, shared experiences, culturally relevant hospitality, repeated exposure, and relationship-building, the methodology strengthens belonging, encourages disclosure, and supports preventative action before challenges escalate.

The methodology is organised around the Trust Accumulation Model™, a seven-stage pathway describing how trusted environments progress into prevention outcomes. It expands into Jollof Nights Connect™, a Human Connection Infrastructure For Prevention™ framework designed to activate trusted relationships across multiple environments, including barbershops, universities, faith organisations, football clubs, community centres, family networks, and digital communities.

Drawing on practice-based evidence and informed by neuroscience, attachment theory, relationship science, health creation, and community development principles, the methodology advances a central proposition: trusted human connection functions as a prevention asset. When intentionally organised, it can also function as infrastructure.

This publication documents the origins, evolution, scientific foundations, replication framework, and future development of the methodology while proposing a practical prevention model that places trust at the centre of community health and wellbeing.

6. KEYWORDS

Trust
Human Connection
Prevention
Belonging
Health Creation
Community Health
Social Capital
Behaviour Change
Health Equity
Community Infrastructure
Public Health
Trusted Spaces
Trusted Relationships
Barbershops
Human Connection Infrastructure For Prevention™
Trust Accumulation Model™
Jollof Nights™
Jollof Nights Connect™
Community Wellbeing
Early Intervention

7. CORE PROPOSITION

The central proposition of the Jollof Nights™ Methodology is that trusted human connection functions as a prevention asset.

The methodology proposes a repeatable relational sequence:

Trust creates belonging.
Belonging creates conversation.
Conversation creates disclosure.
Disclosure creates action.
Action creates opportunities for prevention.

This model positions trust not as a soft social outcome, but as a measurable community asset capable of influencing engagement, behaviour, wellbeing, resilience, and prevention outcomes.

It further proposes that trusted relationships can function as infrastructure. When organised intentionally through trusted spaces, trusted people, trusted relationships, trusted conversations, and trusted action, human connection becomes capable of supporting prevention at scale.

This proposition forms the foundation of:

- The Trust Accumulation Model™
- Jollof Nights™

- Jollof Nights Connect™
- Human Connection Infrastructure For Prevention™

The methodology does not replace services or clinical care. It strengthens engagement with them by creating conditions in which people are more likely to seek support earlier.

Its central claim is simple:

Trusted human connection is a prevention asset.
When organised intentionally, trusted human connection becomes infrastructure.

8. METHODOLOGICAL ARCHITECTURE

The Jollof Nights™ Methodology is structured across six connected elements.

At the highest level sits the **Jollof Nights™ Methodology** as the master framework.

Beneath it sits the **Trust Accumulation Model™** as the theoretical framework.

The **Trust Activation Principle™** serves as the operational starting point.

Trust Stewardship™ provides the stewardship framework.

Jollof Nights™ functions as the delivery pathway.

Jollof Nights Connect™ operates as the scaling infrastructure.

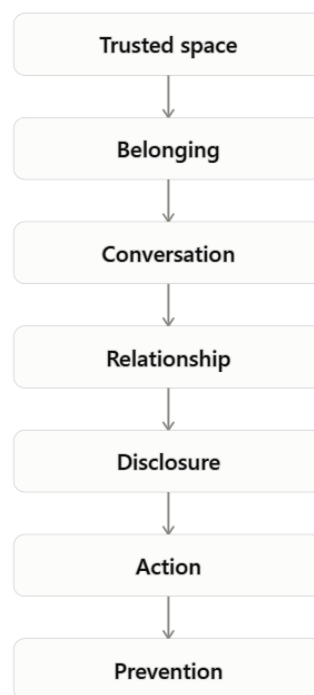
Together, these six elements form the **Human Connection Infrastructure For Prevention™**.

This architecture defines the relationship between theory, activation, stewardship, delivery, and scale.

9. FIGURES AND MODELS

The following figures summarise the core frameworks underpinning the Jollof Nights™ Methodology. Together, they demonstrate the relational, operational, and structural foundations of the methodology and the wider Human Connection Infrastructure For Prevention™ framework.

Figure 1: The Trust Accumulation Model™

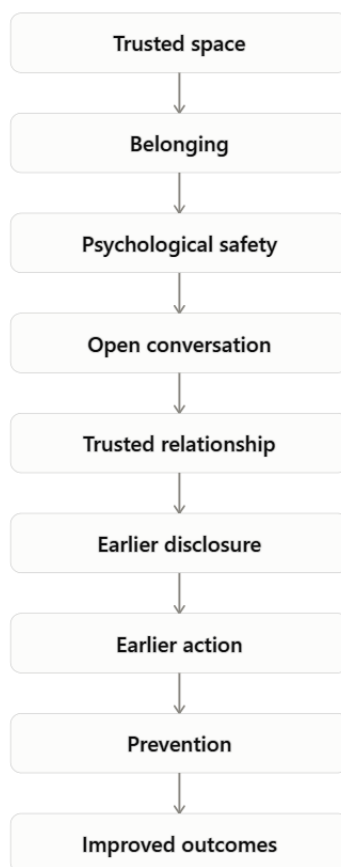


Description

The Trust Accumulation Model™ proposes that prevention develops through a relational sequence rather than through information alone. It begins when individuals enter trusted environments. Those environments create belonging, belonging enables conversation, conversation strengthens relationships, relationships support disclosure, and disclosure creates opportunities for action and prevention.

The model positions trust as the operational mechanism through which prevention becomes possible.

Figure 2: The Trust Asset Formation™



Description

The Trust Asset Formation™ illustrates how trust develops into a structured prevention asset through a progressive sequence of relational components. Beginning with a trusted space, the framework demonstrates how belonging, psychological safety, open conversation, trusted relationships, earlier disclosure, and earlier action create the conditions for prevention and improved outcomes.

Rather than viewing trust as an incidental by-product of service delivery, the framework positions trust as a strategic community asset that can be intentionally identified, strengthened, organised, stewarded, and activated.

Trust Asset Formation™ forms part of the wider operational architecture of the Jollof Nights™ Methodology and the Human Connection Infrastructure For Prevention™ framework.

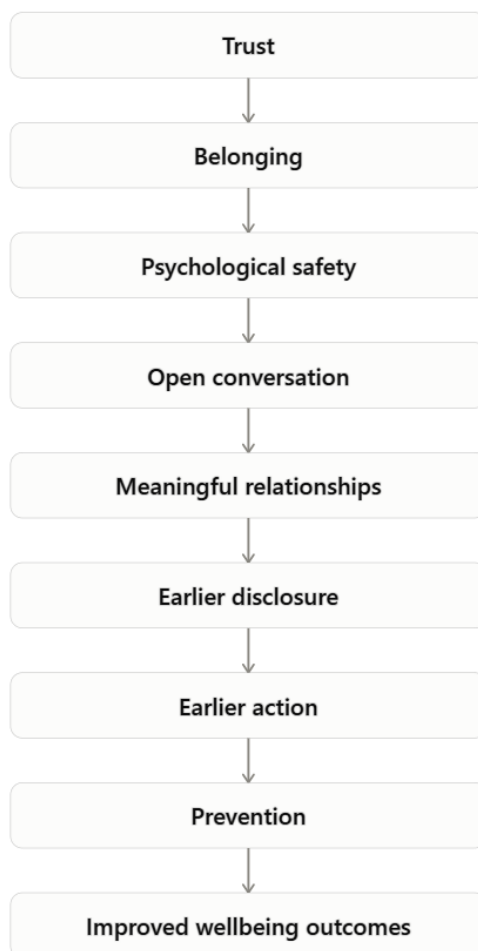
Figure 3: Evolution of the Methodology



Description

This figure illustrates the development of the methodology from its origins at Headlinerz Barbershop into its current prevention infrastructure model. It demonstrates how practical observations around trust, belonging, and disclosure evolved into a structured prevention system.

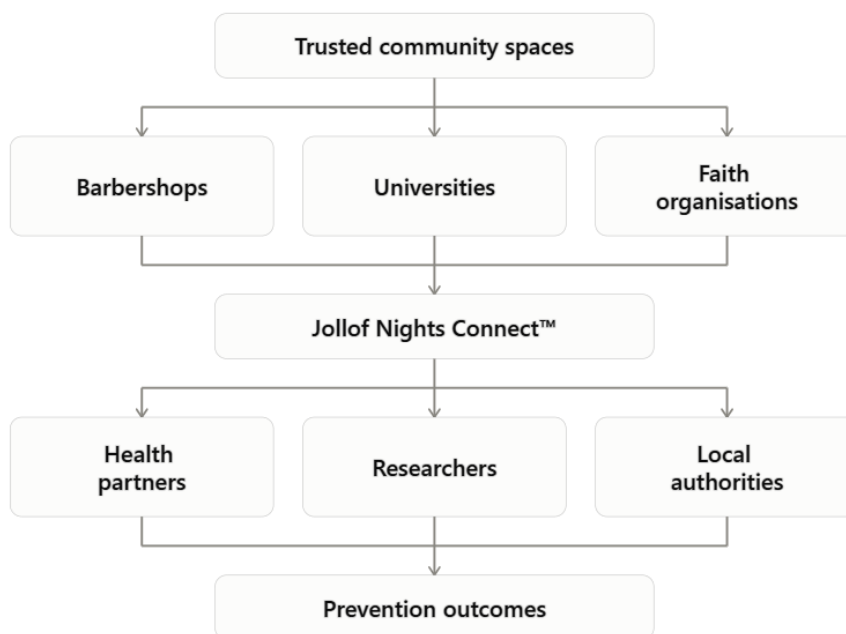
Figure 4: The Prevention Pathway™



Description

The Prevention Pathway™ demonstrates the proposed mechanism through which trusted human connection contributes to prevention outcomes. It presents prevention as the cumulative result of relational processes developing over time.

Figure 5: The Jollof Nights Connect™ Ecosystem

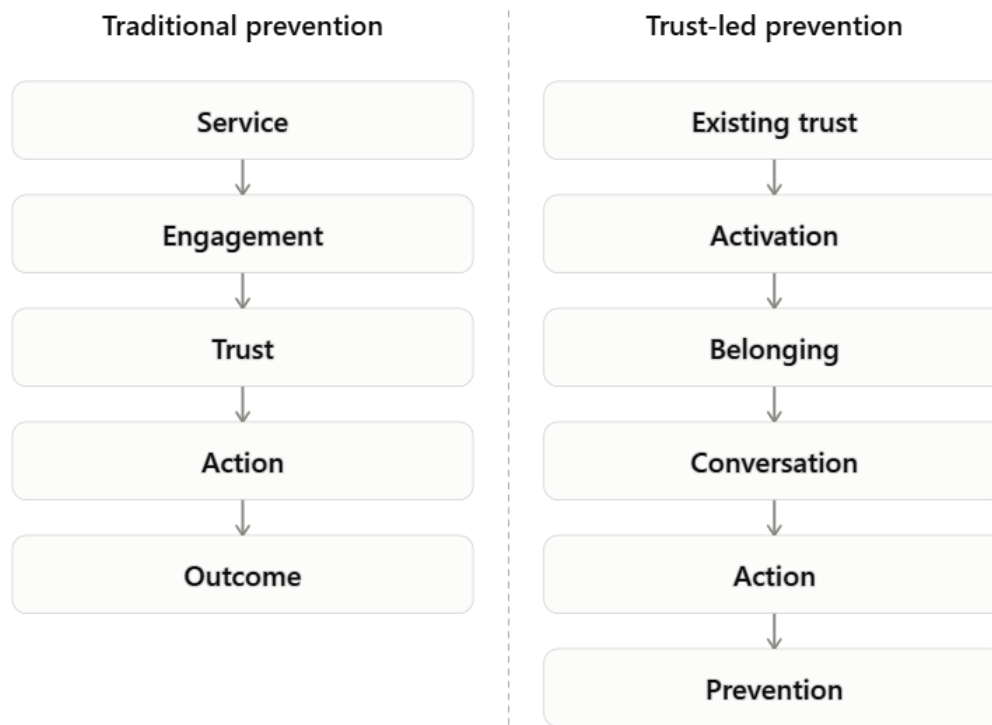


Description

The ecosystem model demonstrates how trusted spaces can be connected through a shared methodology and infrastructure. Rather than operating in isolation, they form part of a wider prevention network capable of supporting wellbeing, resilience, health creation, research participation, and earlier intervention.

At infrastructure level, this relationship is not linear but ecosystem-based, allowing trusted community spaces and system partners to strengthen one another through continuous participation, learning, and prevention activity.

Figure 6: The Trust Activation Principle™



Description

The Trust Activation Principle™ explains one of the central distinctions between the Jollof Nights™ Methodology and traditional prevention models. Conventional prevention typically introduces a service first and attempts to build trust around it. Jollof Nights™ begins with trust that already exists and activates it as the starting point for prevention.

This principle underpins the Trust Accumulation Model™ and the wider Human Connection Infrastructure For Prevention™ framework.

10. EXECUTIVE SUMMARY

Jollof Nights™ is a trust-led human connection methodology designed to create the conditions for earlier conversation, earlier action, and earlier prevention.

Developed through lived experience and community practice beginning in 2018, the methodology emerged from a simple observation: many people, particularly men, carry emotional, social, financial, and health burdens in silence despite living among others facing similar challenges.

Rather than creating new services and asking communities to trust them, Jollof Nights™ identifies and activates trust that already exists within communities.

Through trusted spaces, trusted people, shared experiences, food, and repeated exposure, the methodology creates belonging, strengthens relationships, encourages disclosure, and supports positive action before challenges escalate into crisis.

Since formal sessions began in 2021, Jollof Nights™ has expanded beyond Headlinerz Barbershop into multiple trusted settings and now forms the practical foundation of Jollof Nights Connect™, the wider Human Connection Infrastructure For Prevention™ framework.

The methodology advances one central proposition: trusted human connection functions as a prevention asset.

When trust is intentionally identified, strengthened, and organised, it becomes infrastructure capable of supporting prevention at scale.

The central argument of this publication is simple:

Prevention does not always begin in services.

In many cases, prevention begins in trusted human relationships.

PART 1: ORIGINS – BRINGING BACK THE COMMUNITY (2018–2021)

1.1 Introduction

The origins of the Jollof Nights™ Methodology can be traced to a practical community observation made in 2018. At the time, there was a growing sense that despite living in close proximity to one another, many people were becoming increasingly disconnected. Individuals who shared neighbourhoods, cultures, experiences, and often similar struggles appeared to be living parallel lives with limited meaningful interaction beyond routine social exchanges. Relationships that had historically been shaped by familiarity, collective identity, and informal support appeared to be weakening, while community ties were becoming less visible.

Although this pattern was not unique to one demographic, it appeared particularly noticeable within African and Caribbean communities where traditional support networks had historically played an important role in social life. There was an increasing sense that people were carrying more privately while sharing less openly.

This observation became the starting point of what would later evolve into the Jollof Nights™ Methodology. At the time, however, there was no intention to create a health intervention, prevention model, or structured programme. The original objective was much simpler: to create an environment capable of restoring everyday connection within the community.

1.2 The Problem We Observed

As conversations within the community became more frequent, a recurring pattern began to emerge. Many people appeared to be carrying significant burdens in silence. These burdens varied in form but often centred around emotional stress, financial pressure, family responsibility, relationship difficulties, social isolation, loneliness, and wider concerns relating to identity, purpose, and mental wellbeing.

Although individual circumstances differed, the underlying themes were often consistent. Many individuals were facing challenges that were not unique to them, yet often experienced those challenges in isolation without spaces where honest discussion felt possible.

What became increasingly clear was that the issue was not simply the existence of hardship. Hardship has always existed. The deeper issue appeared to be the absence of trusted environments where those difficulties could be discussed openly, without judgement, stigma, or fear of misunderstanding.

This distinction would later become one of the foundational observations of the methodology.

1.3 Establishing Headlinerz Barbershop

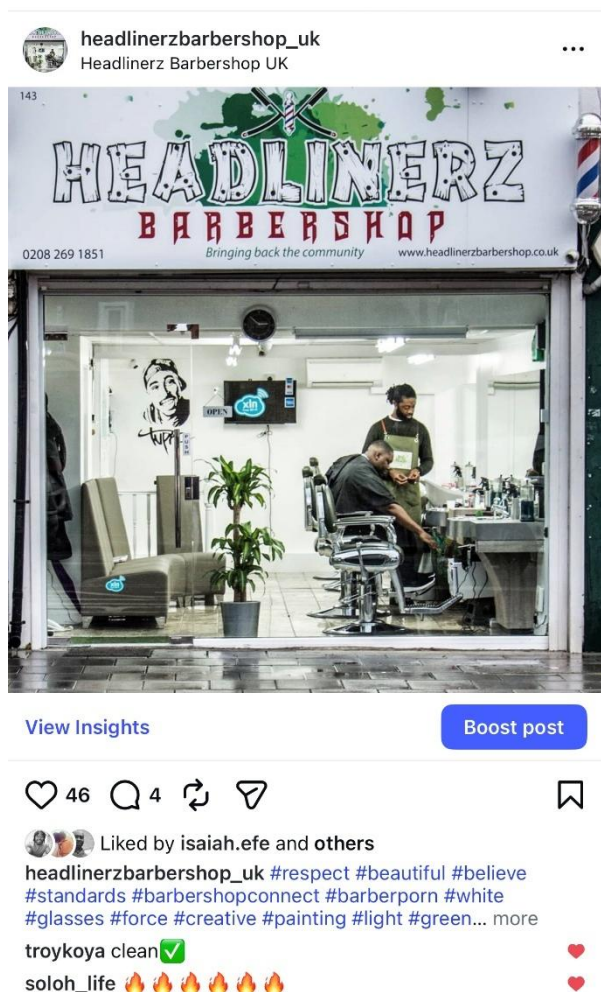


Image 1: Headlinerz early days

In 2018, Headlinerz Barbershop was established with a vision that extended beyond barbering. While grooming remained the commercial foundation of the business, the wider intention was to create a space where people felt welcomed, respected, and comfortable enough to engage beyond the service itself.

The barbershop was intentionally positioned as more than a transactional environment. It was designed to function as a community space where people could meet, talk, relax, exchange experiences, and build relationships over time. This was not formalised as a programme, but it shaped the culture of the environment.

As the space matured, certain patterns became increasingly noticeable. Clients were spending longer in the shop. Conversations often continued after appointments had ended. People returned even when they did not need a haircut. Relationships between staff and clients strengthened, and a wider social function began to emerge.

What had initially been built as a business was gradually becoming a trusted community environment.

1.4 The Human Connection Discovery

As trust between barbers and clients deepened, an important pattern began to emerge. Many of the conversations taking place within the shop extended well beyond grooming. Individuals increasingly used the environment to discuss personal experiences, concerns, and pressures affecting different parts of their lives.

These conversations frequently included family challenges, financial pressure, emotional stress, work-related difficulties, relationship breakdowns, personal ambitions, and broader concerns about life direction.

What made these conversations significant was their spontaneity. They were not prompted by formal intervention, referral, or structured facilitation. They occurred

naturally during ordinary moments because the environment itself had become trusted.

This revealed something important. Trust appeared to create opportunities for conversations that many individuals were not having elsewhere. In several cases, people openly discussed issues they had not previously shared with friends, family members, partners, or colleagues.

The depth of disclosure often appeared directly linked to the strength of the relationship. Where trust was stronger, openness appeared greater.

This observation would later become central to understanding trust as a functional prevention asset.

1.5 Experimenting with Intentional Listening

As these conversations became more frequent, there was a growing recognition that listening itself carried value. This led to more intentional approaches to engagement, informed by principles associated with Mental Health First Aid and active listening.

The objective was not clinical assessment, diagnosis, or therapy. It was to create an environment where individuals felt able to speak honestly and where their experiences could be acknowledged without judgement.

Through this process, recurring themes became increasingly visible. Similar emotional pressures, family burdens, social anxieties, and financial concerns appeared across different ages, professions, and life circumstances. This repetition suggested that many of the struggles people carried were not isolated experiences but shared realities.

Intentional listening strengthened this understanding. It allowed patterns to become clearer and reinforced the importance of trusted environments in creating opportunities for reflection, disclosure, and mutual understanding.

1.6 The First Major Insight

Through repeated informal conversations and sustained observation, one conclusion became increasingly clear: people often did not lack problems to discuss; they lacked environments in which they felt safe enough to discuss them.

This insight would later become the intellectual foundation of the Jollof Nights™ Methodology. It suggested that before attention is given to programmes, interventions, referrals, or services, equal attention must first be given to the environments in which people feel safe enough to engage honestly.

In practice, trust appeared to precede disclosure, disclosure appeared to precede action, and action created opportunities for change. At the time, these observations existed only as practical learning. The concepts of trust accumulation, prevention pathways, and human connection infrastructure had not yet been formally developed.

What existed in 2018 was an emerging recognition that trusted human relationships could produce outcomes extending far beyond the original purpose of a barbershop. This raised an important question: if trusted relationships were already creating opportunities for meaningful conversation, could those relationships be intentionally activated to strengthen community wellbeing?

The search for that answer would lead directly into the next phase of the methodology: the discovery of trust as a prevention asset, explored in **Part 2: Trust Formation – Building on Existing Trust.**

PART 2: TRUST FORMATION – BUILDING ON EXISTING TRUST (2021–2025)

2.1 Introduction

The first phase of the Jollof Nights™ Methodology established an important early insight: people often did not lack problems to discuss; they lacked trusted environments in which those problems could be discussed openly. This observation raised a second and equally important question: what role does trust play in helping people connect, disclose, engage, and ultimately seek support?

The search for this answer became one of the most important stages in the development of the methodology. Over time, it became increasingly clear that trust was not simply a desirable social quality within healthy communities. Trust functioned as an active relational asset. It appeared to influence whether people participated, disclosed, engaged, returned, and acted. Understanding how trust formed therefore became central to the development of the methodology.

2.2 The Discovery of the Trusted Space

As Headlinerz Barbershop continued to grow, an important pattern began to emerge. People were no longer visiting solely for haircuts. Many returned between appointments, some visited simply to spend time in the space, and others stopped by purely for conversation. This indicated that the barbershop was beginning to function as more than a commercial environment.

It was gradually becoming a trusted space.

This distinction proved significant. People were not returning because of advertising or structured outreach. They were returning because the environment had become familiar. The people within it had become familiar, and the repeated experience of that familiarity was creating trust.

This was one of the earliest clear signs that trust could attach itself not only to individuals, but also to environments.

2.3 Understanding the Role of Trust

As time within the environment increased, so did the depth of conversation. Individuals who initially discussed only grooming gradually began sharing family challenges, financial pressures, emotional concerns, work-related stress, personal goals, relationship difficulties, and wider community issues.

What became increasingly important was not simply the content of these conversations, but the conditions that made them possible. These conversations were not occurring because people had suddenly developed new problems. They were occurring because enough trust had developed for existing problems to be discussed.

This reinforced an important methodological insight: trust appeared to function as a gateway. Without trust, many important conversations remained hidden. With trust, those conversations became possible.

2.4 The Barber–Client Relationship

One of the most important observations during this period concerned the unique nature of the barber–client relationship. Across repeated interactions, many individuals were willing to discuss deeply personal matters with their barbers. In some cases, these included issues they had not shared with family members, partners, friends, or colleagues.

This suggested that the barber occupied a distinctive position within the social structure of the community.



Posts
headlinerzbarbershop_uk

headlinerzbarbershop_uk
Headlinerz Barbershop UK

Menshealthforum.org.uk
Search by postcode for lists of local services

Headlinerz mental health trained barbers
All our barbers have received mental health training, we will be happy to speak with you and lend our support.

Sane.org.uk
Support line for people in mental health crisis

Alcoholics-anonymous.org.uk
Phone, or online support for people who are concerned about their alcohol consumption.

UKna.org
Narcotics anonymous, for people who feel they have a drug problem

Papyrus-uk.org
Support line for young people who are thinking about suicide

Mind.org.uk
General advice and information about mental health

Where to get help...
BEGAMBLEAWARE.org
Advice and support for people who think their gambling could be a problem.

www.headlinerzbarbershop.co.uk

View Insights Boost again

Unlike many formal professional relationships, the barber–client relationship is often long-term, informal, repeated, familiar, and largely non-judgemental. These characteristics create conditions in which trust can build naturally over time.

This observation reinforced an important insight: the relationship itself was producing value. The haircut created the point of entry, but the relationship created the conditions for continuity.

85

Liked by esarahh and others

headlinerzbarbershop_uk It is only important that as Men we begin to open up and have that honest conversations about our problems and feelings. Do not isolate yourself, do not give in to suicide, there is still Hope and Help out here.

7 July 2020

2.5 The Decision to Build on Existing Trust

As these observations accumulated, an important methodological decision followed. If trust already existed within the barbershop, there was limited value in attempting to construct entirely new environments elsewhere. It became more practical to build upon trust that had already formed.

This became one of the foundational principles of the methodology:



Do not build trust from scratch where trust already exists.

Rather than asking communities to trust a new programme, it became possible to work through relationships that had already been established. This represented an important shift in thinking. The focus moved away from creating entirely new services and towards activating existing trusted environments.

2.6 The Introduction of Thursday Night Jollof with Jesse d Barber™

In 2021, this thinking led to the introduction of **Thursday Night Jollof with Jesse d Barber™**. The objective was straightforward: bring people together within a space they already trusted.

The model intentionally combined three existing assets:

- Trusted people
- Trusted spaces
- Shared food

The purpose was not clinical or therapeutic. The purpose was relational. The sessions were designed to explore whether gathering people within an already trusted environment could strengthen connection, deepen conversation, and support community wellbeing.

Delivered initially on Thursday evenings, the sessions developed into a men's-only safe space where participants could share food, discuss the realities of life, and build supportive relationships within a familiar environment.

What began as a simple community gathering would become one of the most important practical learning environments for the methodology.

2.7 The Role of Food

Food played an important role within the early model, though not as the intervention itself. Its value lay in its ability to create familiarity, reduce barriers, and strengthen social connection.

Across cultures, sharing food has historically functioned as a mechanism for hospitality, relationship-building, and belonging. In the original delivery of Thursday Night Jollof with Jesse d Barber™, jollof rice and African-Caribbean cuisine were used because they were culturally familiar to many of the participants and reflected the communities being served.

The meal acted as a cultural anchor. It created familiarity, reduced social distance, and helped transform a gathering of individuals into a shared communal experience.



Importantly, the methodology does not propose that jollof rice itself produces these outcomes. Rather, it proposes that shared food helps create relational conditions that support trust, belonging, and conversation.

For this reason, food is treated within the methodology as a flexible community asset rather than a fixed intervention component.

2.8 The Power of Repeated Exposure

As the Thursday Night Jollof sessions continued, another important pattern emerged: people returned.

Many participants attended repeatedly over time. Through this repeated exposure, familiarity between participants increased, trust deepened, and relationships strengthened. Conversations gradually moved beyond introductions and surface-level interaction into more meaningful exchanges.

This revealed an important principle: trust rarely develops in a single encounter. It accumulates through repeated positive interactions over time.

Each session strengthened familiarity. Each return reinforced belonging. Each conversation deepened trust.

This repeated relational layering would later become formalised as **Trust Accumulation™**.

2.9 The Impact of the Pandemic

The years following the COVID-19 pandemic revealed another important contextual factor. Many men appeared to be carrying increased emotional strain, uncertainty, loneliness, stress, and wider social pressure. Participants increasingly used the sessions as opportunities to offload burdens they had been carrying privately.

The trusted environment created space for conversations that often had no obvious outlet elsewhere.

For many participants, the barbershop became more than a gathering place. It became a consistent social anchor where trusted people, familiar faces, shared food, and respectful conversation provided a practical form of support during a period of wider instability.

This strengthened the growing belief that trust itself was doing much of the relational work.

2.10 The Second Major Insight

By the end of this phase, a second major insight had become clear: trusted relationships create conditions for earlier conversations, and earlier conversations create opportunities for earlier prevention.

This insight became the bridge between trust and prevention.

The next phase of the methodology would focus on understanding how trust develops over time, how it accumulates, and how it creates pathways towards action. This would later become formalised as the **Trust Accumulation Model™**, explored in **Part 3**.

PART 3: THE TRUST ACCUMULATION MODEL™

3.1 Introduction

The earlier phases of the Jollof Nights™ Methodology established two important foundations. First, many people carry personal, emotional, financial, and social burdens without access to trusted environments in which those burdens can be discussed openly. Second, trust can be strengthened intentionally when people are brought together through familiar spaces, familiar people, shared experiences, and repeated exposure.

These early observations raised an important methodological question: if trust can be strengthened, how does it develop over time, and what practical effects does that development produce?

Between 2021 and 2025, the continued delivery of Thursday Night Jollof with Jesse d Barber™ provided the opportunity to observe this process in practice. Across repeated sessions, a consistent pattern began to emerge. Participants rarely moved directly from attendance into disclosure or action. Instead, engagement appeared to develop progressively. Familiarity increased first, followed by comfort, openness, disclosure, and eventually practical action.

This pattern became more visible as participants returned over time. Attendance was no longer driven solely by the sessions themselves, but increasingly by the relationships that had formed within them. Participants adjusted their schedules to attend, introduced others into the space, and often questioned interruptions in delivery. These behaviours suggested that the sessions had become more than occasional gatherings. They had become part of an informal support structure built through repeated trust.

As the methodology expanded into additional barbershops and later into university settings, similar relational patterns continued to emerge. Although the environments differed, the sequence remained broadly consistent. This suggested that the process was not dependent upon a particular venue, but upon the presence of relational conditions that allowed trust to develop.

These repeated observations led to the formal development of the **Trust Accumulation Model™**, a seven-stage framework describing how trust develops progressively and how that progression creates conditions for earlier prevention.



CONSOLIGREAT BARBERSHOP



GADO HAIR LOUNGE



UNIVERSITY OF GREENWICH



HEADLINERZ BARBERSHOP



NICK'S HQ BARBERSHOP

3.2 Trust as a Dynamic Asset

Traditional approaches often treat trust as a fixed social characteristic — something either present or absent. The practical evidence gathered through Jollof Nights™ suggested a different understanding.

Trust appeared to function as something dynamic. It developed through repeated positive interaction, strengthened through consistency, and deepened through shared experience. This meant trust could not be understood merely as a social feeling; it carried practical consequences.

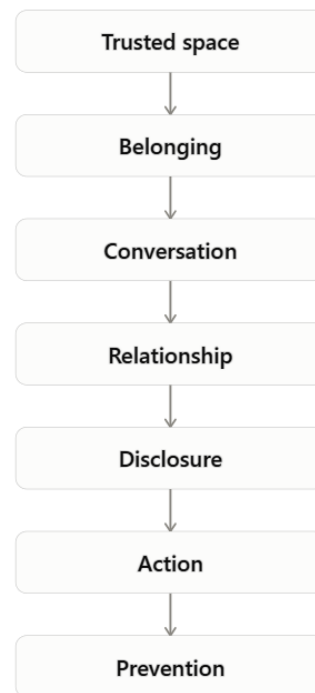
Where trust strengthened, participation increased. Where participation increased, conversations became deeper. Where conversations became deeper, disclosure became more likely. Where disclosure occurred earlier, opportunities for support, intervention, and behavioural change also appeared earlier.

This distinction is important because it repositions trust from being a secondary by-product of engagement into an active prevention asset. If trust can accumulate, it can function as a practical resource capable of influencing behaviour, improving engagement, and creating earlier opportunities for support.

This became one of the most important conceptual developments within the methodology.

3.3 The Seven Stages

Through repeated observation, seven relational stages became identifiable. Together, they form the Trust Accumulation Model™ and describe how trusted human connection develops into prevention outcomes.



The model begins with a trusted space. This refers to an environment where familiarity, credibility, and psychological safety already exist. The space reduces barriers to entry and increases the likelihood of participation.

From there, belonging begins to develop. Belonging is the process through which individuals begin to feel accepted, respected, valued, and understood within that environment. This stage is important because attendance alone does not create engagement; belonging does.

Once belonging is established, conversations begin to deepen. What starts as surface-level interaction gradually becomes more open, honest, and meaningful as emotional safety increases.

Over time, these conversations strengthen into meaningful relationships. Participants begin to understand one another beyond introductions and surface identities. Repeated exposure creates familiarity, and familiarity strengthens relational confidence.

These meaningful relationships create opportunities for earlier disclosure. Personal struggles, emotional burdens, financial pressures, health concerns, and wider life challenges become easier to discuss because trust has reduced the social cost of vulnerability.

Earlier disclosure creates opportunities for action. This may involve reflection, behavioural adjustment, seeking support, reconnecting with community, or accessing formal services.

The final outcome is prevention. Challenges are recognised earlier, conversations happen earlier, support is accessed earlier, and opportunities for intervention emerge earlier.

The Trust Accumulation Model™ therefore positions prevention as the cumulative result of relational development rather than as a single intervention event.

3.4 Neuroscientific Alignment

Although the Trust Accumulation Model™ emerged through practical community observation, later engagement with established scientific literature revealed important alignment.

In A General Theory of Love, the authors argue that human beings are shaped through relationships and that emotional regulation is deeply influenced by relational environments. Their concepts of limbic resonance, limbic regulation, and limbic revision suggest that human beings continuously influence one another's emotional states through connection.

These concepts help explain several observations within the Jollof Nights™ Methodology. Trusted environments appear to reduce emotional defensiveness. Belonging appears to increase openness. Repeated positive interaction appears to strengthen emotional safety. Supportive relationships appear to increase confidence and encourage action.

The methodology emerged through practice, while the science provides a useful explanatory lens for the relational patterns observed.

3.5 The Core Insight

The central insight from this phase is that prevention rarely begins at the point of intervention.

It begins earlier.

It begins when trust has accumulated enough for honest conversation to become possible.

This distinction is important because services, interventions, and information remain valuable, but they often depend upon an earlier condition: whether an individual feels safe enough to engage with them.

The Trust Accumulation Model™ therefore positions trust not as the outcome of prevention, but as one of its earliest enabling conditions.

Its contribution to the wider methodology is significant because it provides a structured explanation for how human connection can move from familiarity to prevention in a repeatable and observable way.

At its core, the model establishes a simple principle:

Prevention does not begin at intervention. It begins at trust.

The next phase explores how accumulated trust can be intentionally stewarded, protected, and expanded through trusted individuals across wider communities. This forms the basis of **Part 3A: Trust Stewardship™ — Converting Existing Trust into Prevention.**

PART 3A: TRUST STEWARDSHIP™ — CONVERTING SUITABLE TRUST INTO PREVENTION

3A.1 Introduction

As the Jollof Nights™ Methodology developed, attention shifted from understanding how trust accumulates to understanding how it can be sustained and applied across multiple settings. The earlier phases had shown that trust creates the conditions for conversation, disclosure, and action. The practical question that followed was how those conditions could be preserved beyond a single environment or a single trusted individual.

This led to the development of **Trust Stewardship™**.

Trust Stewardship™ refers to the identification of suitable trust assets within communities and the structured process of equipping those individuals to support prevention more intentionally. It begins from the recognition that trust already exists in many social environments and that, under the right conditions, that trust can support earlier engagement, earlier disclosure, and earlier action.

The methodology recognises that the presence of trust alone does not automatically create prevention value. Trust may exist without the context, boundaries, or capacity required to hold vulnerable conversations safely. For this reason, Trust Stewardship™ focuses on trust that carries relational credibility, operates within a context capable of supporting honest conversation, and can be held responsibly by the individual involved.

This introduced an important operational development within the methodology. Rather than beginning with recruitment, the process begins with recognition. The starting point is not who can be trained, but who is already trusted and whether that trust can be strengthened without altering the relationship itself.

3A.2 The Emergence of Trust Stewardship™

The expansion of Jollof Nights™ into additional barbershops and later into university settings showed that the relational principles of the methodology were transferable. Similar patterns of belonging, openness, and disclosure continued to appear across different environments. This suggested that the model was not dependent on a specific venue, but on the conditions through which trust was allowed to develop.

At the same time, expansion exposed a limitation. While the structure of the methodology could be repeated, trust itself could not simply be replicated. Trust remained local, relational, and shaped by the history of the people within that environment.

This meant that growth required a different approach. Instead of recreating trust from the beginning in each new setting, the methodology began identifying where trust already existed and how it could be strengthened without disrupting its authenticity.

Trust Stewardship™ emerged from this practical requirement.

3A.3 Identifying Existing Trust Assets

Communities contain individuals who already hold trust, often outside formal systems. These individuals are frequently the first point of contact when personal, family, emotional, or social pressures begin to build.

They may include barbers, faith leaders, youth workers, sports coaches, teachers, community organisers, parents, elders, and peer mentors. What connects them is not professional role, but established relational credibility.

The methodology treats these individuals as potential trust assets, but only where suitability is present.

This requires assessment rather than assumption. Existing trust must be understood in context. The nature of the environment, the quality of the relationship, and the individual's ability to hold difficult conversations responsibly all influence whether that trust can support prevention.

Trust Stewardship™ therefore begins with identifying trust and determining its suitability before any formal activation takes place.

3A.4 Equipping Trusted Individuals

Once suitable trust assets are identified, the next stage is to strengthen their practical capacity.

This does not involve transferring clinical responsibility into community settings. The purpose is not treatment. The purpose is to strengthen the ability of trusted individuals to recognise concerns earlier, hold conversations more safely, and support movement towards action where appropriate.

This may involve training in active listening, boundary awareness, safeguarding, emotional safety, observation, facilitation, and signposting.

These areas do not replace the relationship. They strengthen its usefulness within prevention.

The role of the Trust Steward™ remains relational. Their value lies in helping create conditions where issues surface earlier and where individuals feel able to move towards support before problems escalate.

3A.5 Building a Network of Trust Stewards™

As suitable trust assets are identified and equipped across multiple settings, the methodology begins to operate as a wider network.

Each Trust Steward™ remains rooted in their own environment and works through trust that already exists within that setting. The methodology provides a shared framework, but the trust itself remains local.

This creates multiple relational access points into prevention across different environments while preserving the authenticity of each relationship.

The practical implication is that prevention no longer depends on one location or one trusted individual. It becomes distributed across multiple trusted environments while operating through one shared methodological logic.

Through this process, trust moves from isolated relational value into a structured prevention asset capable of operating across multiple community environments.

PART 4: JOLLOF NIGHTS™ — THE FIRST STRUCTURED PREVENTION PATHWAY

4.1 Introduction

The Trust Accumulation Model™ provided a structured explanation of how trust develops over time and how that development creates the conditions for belonging, conversation, disclosure, action, and prevention. By this stage of the methodology, it had become clear that trust was not simply a social by-product of community life, but a functional condition through which earlier engagement and earlier action became more possible.

The next stage of the work was to examine whether these relational conditions could be organised more intentionally. The question was no longer whether trust influenced behaviour, but whether trust could support a repeatable pathway through which prevention opportunities could emerge across different areas of wellbeing and community life.

This marked an important transition in the development of the methodology. The earlier phases had focused on observing trust, understanding its role, and mapping how it accumulated. The next phase focused on application.

This process led to the formal development of **Thursday Night Jollof with Jesse d Barber™** in 2021, which would later evolve into **Jollof Nights™**. What began as a simple trusted gathering gradually became the first structured application of the methodology, providing a practical environment in which trust could be intentionally organised to support earlier conversation, earlier awareness, and earlier action.

The significance of this stage lies in its shift from theory into practice. It was through Jollof Nights™ that the relational principles of the methodology were first tested as an organised pathway rather than remaining as informal observations within everyday barbershop life.

4.2 Defining a Prevention Pathway

Within traditional public health and community support systems, prevention often begins with formal structures such as campaigns, programmes, referrals, interventions, or service pathways. These models are usually designed on the assumption that individuals will recognise a need and actively engage with available support.

The Jollof Nights™ Methodology approaches this process differently.

Rather than beginning with intervention, it begins with trust. The methodology starts from the understanding that engagement is often shaped by relational conditions long before formal support is introduced. This shifts the practical focus from building new systems of engagement to identifying environments where trust already exists and where meaningful conversations can happen more naturally.

Within this framework, a prevention pathway is not defined primarily by the services available, but by the relational sequence through which individuals move towards awareness, disclosure, and action. Trust creates entry. Belonging supports participation. Conversation creates visibility. Relationships strengthen safety. Disclosure creates opportunities for action. Prevention follows through earlier recognition and earlier response.

This approach reframes prevention as something that can emerge through existing social environments rather than something that must always begin through formal systems. It does not replace services or professional support. Instead, it strengthens the conditions through which people are more likely to engage with them earlier.

The significance of this distinction is practical. It allows prevention to be organised around trust rather than expecting trust to be built around prevention. This became the central operating principle of Jollof Nights™ and the basis upon which the first structured prevention pathway was developed.

4.3 The Original Model

The original Thursday Night Jollof with Jesse d Barber™ model was intentionally simple. Participants gathered within a barbershop environment that was already familiar to them. Food was shared, conversation took place, and relationships developed through repeated interaction.

There was no formal intervention structure at the point of entry. The environment remained socially ordinary, which reduced resistance and allowed participation to feel natural rather than prescribed.

Over time, repeated attendance strengthened familiarity between participants. That familiarity deepened trust and increased the willingness to engage in more honest conversations. As these relationships developed, personal challenges that might otherwise have remained private became easier to discuss.

This process revealed an important operational principle within the methodology: the simplicity of the environment was part of its effectiveness. The absence of formal pressure allowed trust to remain central.

4.4 The Prevention Mechanism

The effectiveness of Jollof Nights™ did not depend on one specific topic. Conversations regularly moved across mental wellbeing, fatherhood, grief, relationships, financial pressure, loneliness, identity, employment, physical health, and wider community issues.

What remained consistent across these discussions was the relational environment in which they took place.

Participants were often willing to discuss difficult experiences because trust reduced social defensiveness. This made disclosure more likely and created earlier opportunities for action.

The prevention mechanism therefore did not sit within the subject matter itself. It sat within the relational conditions surrounding the subject matter.

This distinction is important because it explains why the pathway remained adaptable. The issue being discussed could change, but the relational sequence remained the same.

4.5 Prevention Through Belonging

Belonging became one of the most consistent operational features of the Jollof Nights™ pathway. Across sessions, participants often described feeling understood, recognised, and less isolated.

In many cases, individuals realised that struggles they believed were private were shared by others.

This had practical implications. Belonging reduced emotional isolation, increased confidence, and strengthened social participation. It also made individuals more willing to speak honestly about their experiences.

Within the methodology, belonging is not treated as a passive emotional outcome. It functions as an active part of the prevention pathway by reducing the barriers that often prevent earlier disclosure.

4.6 Prevention Through Conversation

Conversation became one of the most active mechanisms within the pathway because it created opportunities for visibility.

Many issues remain hidden until they are spoken about.

Jollof Nights™ created repeated opportunities for reflection, shared learning, questioning, and support through conversation. This often allowed personal concerns to surface earlier than they may have within formal systems.

This is significant because earlier conversation often creates earlier opportunities for support.

Within the methodology, conversation is therefore understood as one of the practical routes through which prevention opportunities become visible.

4.7 Prevention Through Trusted Relationships

Across the delivery of Jollof Nights™, the strongest predictor of continued engagement was the quality of the relationships within the space.

Trusted relationships influenced attendance, retention, openness, and willingness to act.

This aligns with the relational science outlined in A General Theory of Love, which explains how emotional regulation is shaped through trusted human connection.

Within Jollof Nights™, trusted relationships appeared to create emotional safety. That emotional safety increased engagement. Increased engagement created more opportunities for disclosure and earlier action.

This did not mean trust functioned as a prevention asset in every circumstance. However, under the right relational and environmental conditions, trust consistently increased the likelihood of earlier engagement.

4.8 Expansion of the Prevention Pathway

As confidence in the model increased, the same relational pathway began supporting a wider range of prevention objectives.



These included mental wellbeing, emotional wellbeing, community cohesion, physical health awareness, blood pressure awareness, community-based blood pressure checks, earlier signposting opportunities, diabetes awareness, prostate cancer awareness, food literacy, and family wellbeing.

This demonstrated that the methodology was not tied to one issue.

Its value lay in its ability to create relational conditions through which multiple forms of prevention could emerge depending on the needs of the participants.

The structure remained consistent even as the prevention focus widened.

4.9 Illustrative Prevention Example

As the methodology expanded into practical health engagement, trusted relationships created opportunities for earlier physical health awareness.

One example involved a participant undertaking a routine blood pressure check within a trusted barbershop environment as part of the wider Jollof Nights™ pathway. The reading returned at **223/124 mmHg**, a critically elevated level requiring urgent clinical attention.

The participant was immediately advised to seek urgent medical assessment.

He later reported:

“Bro, you saved my life. If not for you, I would never have known.”

This example does not function as scientific proof of the methodology. Its value lies in demonstrating how trust can create earlier opportunities for awareness, recognition of risk, and action before escalation.

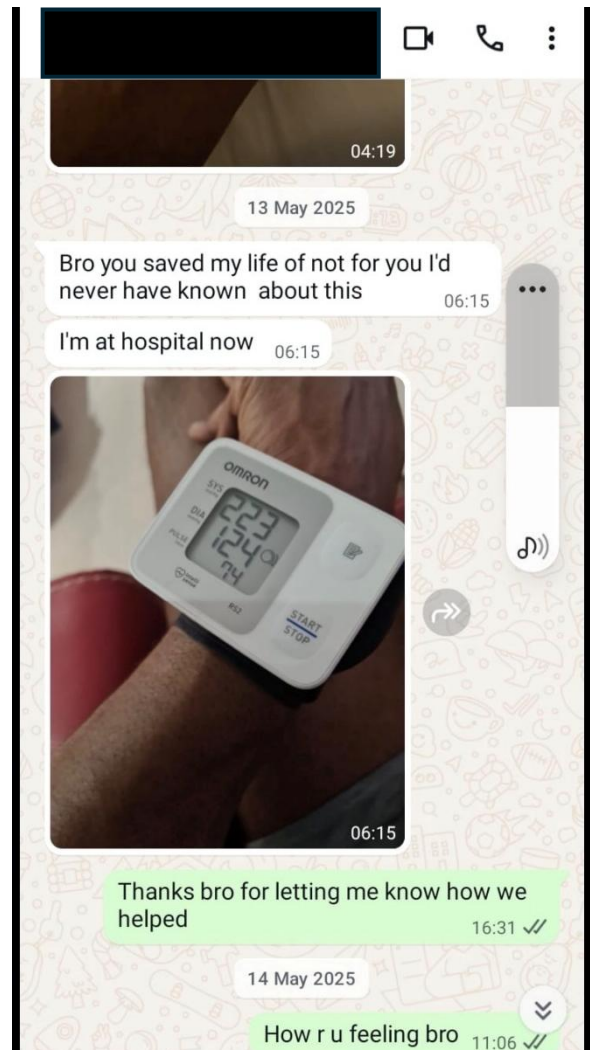


IMAGE – BLOOD PRESSURE CASE EVIDENCE

4.10 Why Jollof Nights™ Matters

Jollof Nights™ did not create conversation. Its contribution was the intentional organisation of trust into a repeatable prevention pathway.

Its significance lies in demonstrating that prevention opportunities can emerge within environments people already trust and return to.

Rather than asking how people can be persuaded to engage with prevention, the methodology asks where trust already exists and how that trust can support earlier awareness and earlier action.

This shifts relationships from being peripheral to being central within prevention design.

4.11 The First Structured Prevention Pathway

Through repeated delivery, observation, refinement, and expansion, Jollof Nights™ developed into the first structured prevention pathway within the wider methodology.

Its core components remained consistent: trusted spaces, trusted people, shared experiences, belonging, conversation, relationships, and earlier action.

Together, these created conditions in which prevention opportunities could emerge more naturally through trust.

This stage established an important principle within the methodology: trust could be intentionally organised into a repeatable pathway capable of supporting prevention across multiple areas of community life.

This raised the next methodological question.

If one trusted pathway could create prevention opportunities, could multiple trusted pathways be connected and organised across wider communities?

This question would lead directly to the development of **Jollof Nights Connect™** and the wider **Human Connection Infrastructure For Prevention™**.

PART 5: FROM JOLLOF NIGHTS™ TO JOLLOF NIGHTS CONNECT™

5.1 Introduction

By 2025, the Jollof Nights™ Methodology had generated a significant body of practical learning. What began as informal conversations within Headlinerz Barbershop had developed into a structured prevention pathway operating across multiple trusted environments. Over time, participants returned regularly, relationships strengthened, and conversations increasingly created opportunities for disclosure, support, and action.

By this stage, the Trust Accumulation Model™ had already provided a framework for understanding how these patterns developed. It had established that prevention often followed trust, belonging, conversation, and relationship-building, rather than formal intervention alone. Jollof Nights™ had become the first practical pathway through which these conditions could be intentionally organised.

As the methodology matured, however, another question began to emerge. It was no longer enough to understand how trust functioned within a single pathway. The wider question was whether the value being created sat within the sessions themselves or within something deeper.

For several years, the most obvious assumption was that Jollof Nights™ itself was the asset. The sessions were visible, the gatherings were structured, and the outcomes could be directly observed. Yet repeated delivery gradually revealed something different. The value being created was not located in the event itself, but in the trust being organised through it.

This recognition altered the direction of the methodology. The focus began to move from programme delivery towards understanding trust itself as a community asset capable of supporting prevention beyond a single environment.

5.2 Looking Beyond the Event

As Jollof Nights™ continued across multiple sessions and settings, it became increasingly difficult to explain its outcomes purely through activities alone. The discussion topics changed regularly. Some sessions focused on mental wellbeing, others on fatherhood, grief, relationships, financial pressures, physical health, or wider community concerns. Although the subject matter varied, the strength of participation remained consistent.

This consistency suggested that the content alone could not account for the level of engagement being observed.

Participants were not returning because a particular discussion had been scheduled or because formal presentations had been arranged. They returned because the environment had become familiar, the people within it had become trusted, and the relationships formed over time had become meaningful.

Food remained important. Hospitality remained important. Conversation remained important. But their significance increasingly appeared to lie in their ability to support connection rather than in their standalone value.

What remained constant across all sessions was the trust being strengthened through repeated interaction. This shifted the methodology away from evaluating activities in isolation and towards understanding the relational asset developing beneath them.

5.3 The Infrastructure Question

Once trust was recognised as the primary asset, the practical implications of the methodology widened.

If trusted relationships could create opportunities for earlier disclosure, earlier action, and prevention within a barbershop environment, it became necessary to ask whether those same principles could support wider forms of prevention across different settings.

This led to a broader set of practical questions. Could trusted relationships improve engagement with health services? Could they support earlier health awareness? Could they strengthen research participation? Could they improve educational engagement? Could they strengthen family support systems? Could they improve community resilience?

These questions gradually led to a larger methodological consideration.

The question was no longer whether trust influenced prevention. That had already been repeatedly observed. The question became whether trust itself could be intentionally organised as infrastructure for prevention.

This marked an important development in the methodology, moving the focus beyond individual pathways and towards connected systems.

5.4 The Realisation

One of the clearest observations during this stage was that trust was not unique to Jollof Nights™.

It already existed across many community environments.

Barbershops carried trust through repeated social contact. Faith spaces carried trust through shared spiritual and relational familiarity. Community centres often carried trust through local identity and repeated participation. Football clubs carried trust through collective engagement. Universities carried trust through educational belonging. Families often carried existing forms of trust through long-standing relationships. Local leaders often carried trust through visibility, consistency, and credibility.

This changed the practical challenge.

The challenge was not creating trust from the beginning in every setting. The challenge was recognising where trust already existed and understanding how it could be activated.

This reinforced one of the methodology's central principles:

Do not build trust from scratch where trust already exists.

This principle had already shaped the development of Jollof Nights™. At this stage, it began shaping the foundations of a wider infrastructure model.

5.5 From Prevention Pathway to Prevention Infrastructure

Jollof Nights™ had demonstrated that trusted relationships could support prevention. The next stage was to understand whether multiple trusted environments could operate together as part of a broader prevention system.

This shifted the operational question.

The focus moved from asking how to run more sessions towards asking how to activate more trusted environments.

This distinction clarified the difference between programme-thinking and infrastructure-thinking.

Programmes are organised around activities. Infrastructure is organised around assets.

Activities may begin and end. Assets can be sustained, strengthened, connected, and reused.

This distinction opened a wider possibility.

Rather than designing separate interventions for individual challenges, it became possible to imagine a shared prevention infrastructure built upon trusted relationships across multiple community settings.

Such an infrastructure could support mental wellbeing, emotional wellbeing, physical health awareness, blood pressure checks, diabetes awareness, prostate awareness, behavioural change, family wellbeing, research participation, community resilience, and earlier intervention.

This became the operational foundation for what would later be formalised as Jollof Nights Connect™.

5.6 The Influence of Human Connection Science

As this thinking developed, relationship science provided useful language for understanding what had already been observed through practice.

In A General Theory of Love, the authors argue that human beings are shaped through connection and that emotional regulation is influenced relationally as much as individually. Their work explores how stress, behaviour, and resilience are affected by the quality of relationships.

These ideas aligned closely with the practical learning emerging from Jollof Nights™.

Participants often disclosed more when they trusted the environment. They engaged more openly when they felt they belonged. They acted earlier when they felt supported.

These were not isolated patterns. They reflected consistent relational conditions.

The methodology did not emerge from the science. It emerged through community practice. The science helped explain why those practical observations remained consistent.

This strengthened the developing understanding that human connection should not only be viewed as socially valuable, but also as a practical prevention asset.

5.7 Defining Jollof Nights Connect™

Jollof Nights Connect™ emerged directly from this body of learning.

It was developed to represent something larger than a single prevention pathway.

Where Jollof Nights™ demonstrated how trusted relationships could support prevention within a specific environment, Jollof Nights Connect™ was developed as the wider organisational framework through which trusted spaces, trusted people, and trusted relationships could be identified, connected, strengthened, and activated across multiple settings.

It is not simply a programme, and it is not simply a platform.

It is the structural model through which existing trust can be organised more intentionally for prevention.

Its purpose is not to replace trust, but to recognise it, strengthen it, connect it, and organise it in ways that preserve its relational value while extending its practical reach.

This marked the transition from pathway to infrastructure.

5.8 A New Proposition

The evolution from Jollof Nights™ to Jollof Nights Connect™ established a new proposition within the methodology:

Trusted human connection may function as prevention infrastructure when intentionally identified, organised, and activated.

This proposition became the foundation for the next stage of the methodology.

Just as physical infrastructure supports movement, communication, and economic activity, trusted relationships may support earlier conversation, earlier disclosure, earlier action, and earlier prevention.

Within this framework, trusted spaces become more than venues, trusted individuals become more than participants, and trusted relationships become more than social bonds. They become infrastructure assets capable of supporting earlier engagement, earlier action, and earlier prevention.

This proposition formed the basis for the next stage of the methodology: **the development of the Human Connection Infrastructure For Prevention™** framework.

That journey begins in **Part 6**.

PART 6: JOLLOF NIGHTS CONNECT™ — HUMAN CONNECTION INFRASTRUCTURE FOR PREVENTION™

6.1 Introduction

The evolution from Jollof Nights™ to Jollof Nights Connect™ marked the next major stage in the development of the methodology. By this point, the Jollof Nights™ Methodology had moved beyond its original application within Headlinerz Barbershop and had developed into a functioning prevention pathway operating across multiple trusted environments. Through repeated sessions, growing participation, and expanding delivery across different spaces, the methodology had generated a substantial body of practical learning about trust, belonging, conversation, disclosure, and action.

Part 4 established Jollof Nights™ as the first practical prevention pathway. Part 5 established that the true asset being created was not the event itself, but trust. This distinction shifted the methodology away from programme-thinking and toward asset-thinking.

Once trust was understood as the central asset, a wider question emerged. If trust could create conditions for prevention within one pathway, could trust itself be organised beyond individual sessions and environments? Could trust become infrastructure?

These questions led directly to the development of Jollof Nights Connect™.

Jollof Nights Connect™ represents the organisational extension of the methodology. Its purpose is not simply to run sessions, but to identify, connect, strengthen, and organise trusted human relationships across multiple spaces so that prevention opportunities can move more effectively through communities.

The central proposition of this stage is that trusted human connection is not merely supportive of prevention. It may function as infrastructure for prevention itself.

6.2 Why Infrastructure Matters

Infrastructure is commonly understood as the underlying systems that make movement, coordination, and delivery possible. Roads support transport. Electricity grids support energy distribution. Digital networks support communication. Health systems support treatment and care.

Prevention also depends on infrastructure, although its infrastructure is often less visible.

Throughout the development of the Jollof Nights™ Methodology, one pattern repeatedly became clear. People rarely moved into prevention through formal systems first. More often, movement began through trusted human relationships.

Concerns were first disclosed in ordinary conversations. Support was often accepted after trust had already been established. Action usually followed emotional safety rather than information alone.

This pattern reveals something significant about prevention itself. Prevention does not move efficiently through unfamiliar systems where trust is absent. It moves more naturally through environments where trust already exists.

Jollof Nights Connect™ emerged from this understanding. It treats trust not as an informal social benefit, but as an operational condition that shapes how prevention becomes possible.

6.3 Traditional Prevention vs Trust-Led Prevention™

Traditional prevention models often begin by constructing an intervention and then attempting to build trust around it. Services are created, campaigns are launched, and public engagement is pursued with the expectation that trust will gradually develop over time.

The Jollof Nights™ Methodology observed a different sequence.

Across repeated years of delivery, it became increasingly clear that trust was rarely the result of intervention. More often, intervention became possible because trust already existed.

This reversed the order.

Rather than beginning with intervention and attempting to build trust around it, the methodology begins with trust and organises prevention through it.

This distinction changes the practical flow of prevention. It changes where engagement begins, how quickly disclosure becomes possible, and how early action can occur.

Most importantly, it changes the starting point.

The methodology does not begin by asking what intervention needs to be introduced. It begins by asking where trust already exists.

6.4 The Infrastructure Layers

As the methodology expanded, recurring structural patterns became increasingly visible across different trusted environments. These patterns formed the operational architecture of Jollof Nights Connect™.

The infrastructure itself operates through six formal layers, but these layers remain organised around the wider Trust Accumulation pathway of **Trusted Space** → **Belonging** → **Conversation** → **Relationship** → **Disclosure** → **Action** → **Prevention**.

The first layer is **Trusted Space**. This is the physical, social, or relational environment where familiarity lowers the first barrier to participation.

The second layer is **Trusted Person**. These are individuals whose credibility has been built through repeated presence, consistency, and familiarity.

The third layer is **Trusted Relationship**. These relationships create emotional safety and strengthen over repeated interaction.

The fourth layer is **Trusted Conversation**. This is where hidden needs first become visible, often long before formal systems become involved.

The fifth layer is **Trusted Action**. This is the point at which conversation converts into movement. This may involve help-seeking, accepting signposting, attending a blood pressure check, speaking to a GP, or making practical life decisions.

The sixth layer is **Prevention Outcome**. These are the practical results produced when the earlier layers function effectively.

The infrastructure layers do not replace the Trust Accumulation Model™. They operationalise it.

This distinction is important because it preserves the sequential logic through which trust becomes prevention.

6.5 Human Connection Before Digital Connection

A central principle of Jollof Nights Connect™ is that human connection comes before digital connection.

This principle emerged through repeated practical observation. Engagement did not begin because information was available. It began because people trusted the environment through which that information was delivered.

This distinction has become increasingly important in modern prevention systems where digital tools often dominate engagement strategy. While digital systems may improve speed, reach, and coordination, they do not independently create trust.

Trust remains human before it becomes digital.

For this reason, Jollof Nights Connect™ does not treat technology as the primary infrastructure. Technology supports the infrastructure. The infrastructure itself remains relational.

This preserves the core logic of the methodology while allowing it to scale.

6.6 The Role of the Digital Layer

The digital layer within Jollof Nights Connect™ was developed as an operational extension of the wider infrastructure.

Its purpose is not to replace trusted human relationships, but to strengthen coordination between them. It allows trusted spaces to remain connected, supports continuity between sessions, captures participation and recurring themes, strengthens safeguarding, and improves accountability across multiple sites.

This becomes increasingly important as the methodology expands.

Without an organising layer, trust remains localised. With coordination, trust can become distributed.

The digital layer therefore functions as an infrastructure organiser. It connects multiple trusted environments into one wider prevention system while preserving the human-first logic of the methodology.

6.7 Why This Matters for Health Systems

Health systems often encounter people after escalation has already occurred. Many individuals enter support only when symptoms have worsened, when crises have developed, or when earlier opportunities for intervention have already been missed.

The methodology repeatedly observed that this delay is often not caused by lack of services alone. In many cases, it is shaped by the absence of trust.

Jollof Nights Connect™ offers an alternative route.

Rather than expecting individuals to enter formal systems first, it allows systems to work through trusted spaces where relationships already exist. This creates earlier opportunities for conversation, screening, disclosure, and action.

This matters because earlier engagement changes outcomes. It creates more time for support, more time for reflection, and more time for prevention.

In this sense, Jollof Nights Connect™ functions as a bridge between communities and formal systems.

6.8 Scientific Foundation

The practical observations of the methodology align with wider human connection science.

In *A General Theory of Love*, the authors describe how human beings regulate one another through relationship. Their concepts of limbic resonance, limbic regulation, and limbic revision provide a useful scientific framework for understanding how emotional safety, behavioural adaptation, and resilience are influenced relationally.

This perspective supports many of the repeated observations made through the methodology.

Individuals often disclosed more readily in trusted environments. Stress appeared to regulate more effectively through belonging. Action became more likely when emotional safety was present.

These patterns were not accidental. They reflected wider human relational processes that the methodology had already been observing in practice.

Jollof Nights Connect™ does not claim to create these processes. It claims to organise them.

6.9 The Core Infrastructure Proposition

The central proposition of Jollof Nights Connect™ is straightforward.

Trusted human connection functions as infrastructure for prevention.

This proposition is not symbolic. It is operational.

Trust changes participation. Trust changes disclosure. Trust changes willingness to act. Trust changes how early prevention becomes possible.

The methodology argues that where trust can be intentionally identified, strengthened, connected, and organised, prevention capacity can increase across communities.

This does not replace formal systems. It strengthens how people reach them.

6.10 What This Methodology Is Not

The Jollof Nights™ Methodology does not claim ownership over community gathering, food sharing, open conversation, peer support, or general community wellbeing activity.

These are broad social practices that exist across many cultures and contexts.

What the methodology defines is the structured operational sequence through which trust is intentionally activated, accumulated, stewarded, and organised for prevention.

This distinction matters.

It is not the gathering itself that defines the methodology. It is the interdependent trust architecture operating underneath it.

6.11 Protected Operational Signature

The protected operational signature of the Jollof Nights™ Methodology lies in its ordered trust pathway:

Trusted Space → Belonging → Conversation → Relationship → Disclosure → Action → Prevention

This sequence reflects the practical logic repeatedly observed throughout the methodology.

It is strengthened through repeated exposure, Trust Stewardship™, community-led agenda formation, trust-based disclosure pathways, trust-to-action conversion systems, and trust intelligence capture.

What is protected is not the visible gathering.

What is protected is the methodological architecture.

This distinction preserves both the originality and operational integrity of the methodology.

6.12 Looking Forward

By this stage, the methodology had evolved from informal community gathering into structured prevention pathway, and from prevention pathway into organised trust infrastructure.

The next question was no longer theoretical.

It was evidential.

What proof of practice had emerged across the journey?

What had been observed from 2018 to the present?

What practical evidence now existed to support the methodology's development?

These questions form the basis of Part 7: Evidence Base and Proof of Practice.

PART 6A: WHAT MAKES THE JOLLOF NIGHTS™ METHODOLOGY DIFFERENT?

6A.1 Introduction

As the Jollof Nights™ Methodology evolved into a wider Human Connection Infrastructure For Prevention™, an important question began to emerge from healthcare partners, researchers, universities, community organisations, and commissioners.

What makes this methodology different?

By this stage, the methodology had already established that trust functions as a prevention asset and that trusted human connection can be organised into infrastructure. The question now was not whether the methodology worked, but what distinguished it from other forms of community engagement, peer support, and prevention activity.

At surface level, the methodology can appear simple. People gather in familiar spaces, food is shared, conversations take place, relationships develop, and support often follows. However, these visible activities do not fully explain the methodology itself.

Similar activities exist across many communities.

The distinction lies in the operational logic beneath them.

This section outlines the key differences.

6A.2 Trust Already Exists

One of the earliest observations underpinning the methodology was that trust often exists long before any formal intervention arrives.

Across different communities, people already hold trusted relationships with certain spaces, individuals, and social structures.

This practical observation shaped one of the methodology's central principles: the methodology does not begin by asking how trust can be created. It begins by asking where trust already exists.

This matters because many prevention models attempt to build trust around newly introduced programmes. The Jollof Nights™ Methodology reverses this sequence by locating trust first and organising prevention through it.

This changes both speed and access.

It shortens the distance between relationship and action.

6A.3 Beyond Community Engagement

The methodology is not distinct simply because it operates within community spaces.

Community engagement itself is not new.

Public health teams, charities, healthcare systems, and local authorities have long recognised the value of community-based work.

The distinction lies in how the methodology understands what is happening inside those environments.

Many interventions borrow trust in order to deliver something.

The Jollof Nights™ Methodology treats trust itself as the thing being strengthened.

This changes the objective.

The objective is not simply to gain access to communities. The objective is to increase the stock of trust available within communities so that prevention capacity remains stronger even after any single intervention ends.

6A.4 Relationships Before Interventions

Throughout the development of the methodology, a recurring pattern remained consistent.

People rarely engaged because of a programme alone.

They engaged because of relationships.

Participants often attended because someone they trusted invited them. They returned because they felt recognised, respected, and understood. Over time, repeated participation strengthened familiarity, and familiarity strengthened emotional safety.

This led to an important methodological conclusion.

Relationships are not secondary to prevention.

They are part of prevention.

This does not reduce the value of intervention. It places intervention within the relational conditions that make it more effective.

6A.5 Belonging Before Behaviour Change

Many prevention systems are designed around behaviour change, often assuming that information alone will influence action.

The methodology repeatedly observed that information alone is often insufficient where belonging is absent.

Participants engaged more deeply when they felt accepted within the environment. Belonging appeared to reduce resistance, lower emotional defensiveness, and increase openness.

This has important implications.

Before behaviour changes, individuals often need to feel safe enough to participate honestly. Before they disclose concerns, they often need to feel they belong.

For this reason, belonging occupies a central position within the Trust Accumulation Model™.

It is treated as a functional stage of prevention.

6A.6 Conversation Before Signposting

Traditional prevention systems often prioritise signposting early in the intervention process.

The methodology observed that signposting often becomes more effective when it follows trusted conversation rather than precedes it.

Across repeated sessions, conversation consistently revealed needs that would otherwise have remained hidden. These conversations surfaced pressures relating to mental wellbeing, family life, physical health, financial stress, grief, loneliness, and identity.

This led to an important distinction.

Conversation is not merely preparation for prevention.

Within the methodology, conversation itself functions as part of prevention because it creates earlier visibility of risk and earlier opportunities for action.

6A.7 Community-Led Agenda Setting

Another important distinction lies in how the methodology approaches agenda formation.

Many programmes begin with predetermined themes and predetermined outcomes.

The Jollof Nights™ Methodology allows a greater proportion of the agenda to emerge through participant experience.

This does not remove structure. It changes where relevance comes from.

Participants bring current realities into the space, allowing the methodology to remain responsive to the lived pressures affecting the community at that time.

Where specialist knowledge is required, experts can be introduced into environments where trust has already been established.

This preserves the relational integrity of the methodology while improving the quality of engagement.

6A.8 Trust as an Asset

Perhaps the most important distinction within the methodology is the treatment of trust as an asset.

Most systems recognise financial assets, physical assets, institutional assets, and technological assets.

Fewer recognise trust in the same operational way.

Across repeated delivery, higher levels of trust consistently corresponded with stronger attendance, deeper participation, earlier disclosure, and greater willingness to act.

These patterns changed how the methodology understood trust.

Trust was not simply an atmosphere or by-product.

It functioned as an active condition that shaped whether prevention became possible and how early it could occur.

This led to the formal recognition of trust as a prevention asset.

6A.9 Universal Human Application

Although the earliest formal application of the methodology emerged through men's spaces within barbershops, the methodology itself is not restricted to one setting, one demographic, or one cultural context.

Its operational pathway remains human:

Trust → Belonging → Conversation → Relationship → Disclosure → Action → Prevention

These are human relational processes.

This makes the methodology transferable across multiple settings while preserving its core logic.

The venue may change.

The participants may change.

The issue may change.

The trust pathway remains the same.

6A.10 The Central Difference

The central difference between the Jollof Nights™ Methodology and many traditional prevention models can be summarised through one operational distinction.

Traditional prevention often asks how trust can be built around an intervention.

The Jollof Nights™ Methodology asks where trust already exists and how that trust can be activated, strengthened, accumulated, and organised for prevention.

This changes where prevention begins, how engagement develops, and how action becomes possible.

Rather than treating communities as passive recipients of prevention, the methodology treats communities as active trust environments through which prevention can move.

This remains one of its most important distinctions.

6A.11 Conclusion

The Jollof Nights™ Methodology is not defined by food, venue, or gathering. These are visible expressions of the methodology, but they are not the methodology itself.

The methodology is defined by the structured activation of trusted human connection for prevention.

Its distinction lies in its operational sequence, its understanding of trust as an asset, its emphasis on belonging before behaviour change, its positioning of conversation before signposting, and its ability to organise trust into wider prevention infrastructure.

Taken together, these elements form the methodological logic that distinguishes Jollof Nights™ from many traditional prevention approaches.

That logic remains central to the methodology's identity, development, and protection.

PART 7: EVIDENCE BASE AND PROOF OF PRACTICE (2018–PRESENT)

7.1 Introduction

The Jollof Nights™ Methodology did not begin as a formal model constructed through theory. It emerged through sustained community practice, repeated observation, experimentation, and gradual refinement over time. Its development has been shaped by direct engagement with people, relationships, and communities rather than by predefined academic or institutional design.

From its earliest beginnings in 2018 within Headlinerz Barbershop, the work was driven by a simple but deliberate objective: to rebuild community connection. At that stage, there was no formal methodology. There was only an intention to create an environment where people could gather, connect, and experience belonging within a trusted setting.

Over time, repeated patterns began to emerge. Individuals increasingly returned not only for grooming services but for conversation, familiarity, and relational continuity. These repeated interactions created practical insights into how trust develops, how belonging shapes participation, and how trusted relationships create opportunities for earlier conversation, earlier disclosure, and earlier action.

In 2021, these practical observations led to the formal launch of Thursday Night Jollof with Jesse d Barber™ as the first intentional application of what would later become the Jollof Nights™ Methodology. Between 2021 and 2026, the methodology recorded 1,023 participants across 52 sessions, with approximately one in three participants returning for future sessions. This repeat engagement provided important practical evidence that the relational conditions being created were producing continuity beyond one-off attendance.

The significance of this section is not to claim scientific proof of the methodology. Its purpose is to document the practical evidence base that has emerged through repeated delivery, repeated observation, and repeated operational learning across multiple years.

For this reason, the evidence presented here is best understood as practice-based evidence.

7.2 Expansion Through Trusted Spaces

One of the strongest practical indicators supporting the methodology is its ability to function across multiple trusted environments.

What began within Headlinerz Barbershop gradually expanded into other barbershops, wider community spaces, and institutional environments. This expansion was significant because it tested whether the methodology was dependent upon a single location, a single facilitator, or a single community.

The evidence suggested otherwise.

Across different settings, the same underlying patterns continued to appear. Familiarity encouraged attendance. Belonging encouraged openness. Repeated exposure strengthened trust. Trust increased willingness to disclose and engage.

Importantly, expansion did not require the creation of entirely new communities. It relied on identifying and activating trust that already existed within those environments.

This reinforced one of the central operational principles of the methodology:

Do not build trust from scratch where trust already exists.

The ability of the methodology to operate across multiple trusted environments suggests that its continuity depends less on place itself and more on the relational conditions present within that place.

This remains one of the strongest practical indicators of transferability within the methodology.

7.3 External Recognition and Independent Validation

The development of the Jollof Nights™ Methodology has also received recognition beyond its immediate participant group.

Evidence of the underlying philosophy can be traced prior to the formal launch of Thursday Night Jollof with Jesse d Barber™ in 2021. Public communications from Headlinerz Barbershop in 2020 demonstrate an active commitment to community wellbeing, social connection, and mental health awareness. This suggests that the methodology emerged from an existing operational philosophy rather than from a standalone intervention.

In 2023, Headlinerz Barbershop was awarded Best High Street Business at the Royal Greenwich Business Awards. The award submission explicitly referenced Thursday Night Jollof with Jesse d Barber™ and its contribution to community wellbeing, trusted relationships, and social connection.

In 2026, Ndukauba Ltd was formally recognised as a finalist in the Local Collaboration Champion category at the Royal Greenwich Business Awards. This recognition reflected the continued expansion of the methodology into partnership-based delivery and wider community infrastructure.

These recognitions do not serve as proof of the methodology itself. However, they provide independent validation that the practical value of the work has been recognised by external organisations, institutions, and community stakeholders beyond its immediate delivery environments.

7.4 University Pilots

An important stage in testing the transferability of the methodology came through its pilot application in partnership with the University of Greenwich.

This represented an important methodological shift because it moved the model beyond barbershop environments and into a university setting, allowing observation of whether the trust pathway could operate within a different institutional context.

The significance of this pilot was not simply the change in venue, but the continuity of the relational process.

Similar patterns of participation, openness, belonging, and conversation began to emerge. This suggested that the methodology was not dependent upon barbering culture itself. Instead, it reinforced the understanding that the methodology depends upon the existence of trusted human connection and the conditions that allow that trust to develop.

The university pilot strengthened the argument that the methodology is structurally transferable beyond its original context.

This remains an important part of its wider prevention infrastructure potential.

7.5 Health Outcomes

As the methodology evolved, its practical application increasingly extended beyond conversation into wider prevention activity.

One of the most important developments was the introduction of blood pressure awareness and testing within trusted barbershop environments. This marked a significant practical shift because it demonstrated that trusted community spaces could function as points of earlier health engagement without requiring individuals to begin within formal clinical systems.

One example involved a participant who undertook a routine blood pressure check and was found to have a critically elevated reading of 223/124 mmHg. This led to immediate advice to seek urgent clinical assessment. The participant later acknowledged that the intervention may have prevented a serious health crisis.

This example does not serve as scientific proof of the methodology. However, it demonstrates how trusted environments can create earlier opportunities for health awareness, risk identification, and practical action.

Beyond blood pressure awareness, the methodology has increasingly supported wider prevention topics including prostate cancer awareness, diabetes awareness, family wellbeing, food literacy, and community health education.

The significance of these developments lies in the consistency of the trust pathway itself. While the prevention topic changed, the underlying relational mechanism remained stable.

This suggests that the trust pathway may be transferable across multiple prevention objectives.

7.6 Community Intelligence

The most recent phase of development has introduced an important new layer to the methodology: structured community intelligence.

Through the deployment of Jollof Nights Connect™ in 2026, the methodology moved beyond isolated sessions into a cumulative operational infrastructure capable of preserving, organising, and learning from each completed engagement.

Through Session Evidence Records (SER™), each session now generates structured evidence including attendance records, participant feedback, topic selections, facilitator reflections, and supporting media. This creates continuity of learning across sessions and environments.

The Trust Steward Portal™ introduced a further layer of operational intelligence by formalising facilitator reflection, session-level observation, and pattern documentation.

This infrastructure allows recurring themes, emerging pressures, and behavioural patterns to become increasingly visible over time.

This represents an important methodological transition.

The methodology is no longer only producing relational outcomes. It is also producing structured community intelligence.

This strengthens both operational learning and future evaluation.

Across all stages of development, one principle has remained consistent: trust does not function as a solution in itself, but as a condition that increases the likelihood of earlier participation, earlier disclosure, earlier support-seeking, and earlier action.

For this reason, the methodology continues to treat trust as a prevention asset.

The practical evidence presented throughout this section remains primarily practice-based. However, the consistency of observations across multiple years, settings, participant groups, and prevention topics provides a credible operational foundation for future empirical testing, formal evaluation, and longitudinal study.

This forms the bridge into Part 8: **Replication and Licensing Framework™**.

PART 8: REPLICATION AND LICENSING FRAMEWORK™

8.1 Introduction

As the Jollof Nights™ Methodology continued to evolve, an important question began to emerge.

If trust could create opportunities for earlier conversation, earlier disclosure, and earlier prevention within one trusted environment, could the same approach be applied elsewhere without losing the qualities that made it effective?

This question became increasingly important as the methodology expanded beyond Headlinerz Barbershop and was introduced into other trusted community environments. Organisations, community leaders, and public sector partners began expressing interest in adopting the methodology within their own settings. While this represented an opportunity for wider prevention impact, it also introduced an important methodological challenge.

Many community innovations lose effectiveness when they are replicated. Activities are copied, branding is reproduced, and programmes are relaunched in new settings, yet the underlying mechanism that produced the original outcomes is often misunderstood. As a result, what appears to be replication is frequently the reproduction of visible activity rather than the transfer of the methodology itself.

The Jollof Nights™ Methodology takes a different approach.

The purpose of replication is not to reproduce an event, a venue, a facilitator, or a cultural activity. The purpose is to preserve and reproduce the trust pathway that sits beneath those visible expressions.

This distinction is fundamental.

Throughout this publication, the methodology has consistently demonstrated that trust is not treated as a desirable by-product of successful engagement. It is treated as an operational asset that creates the conditions in which prevention becomes more likely.

Replication therefore requires more than reproducing visible activity. It requires preserving the operational conditions through which trust accumulates and prevention becomes possible.

For this reason, replication cannot be separated from governance.

Without governance, methodological drift becomes increasingly likely. Organisations may adopt individual components while unintentionally altering the operational logic that gives the methodology its integrity. Over time, this can weaken consistency, reduce effectiveness, and create uncertainty about what does and does not constitute the Jollof Nights™ Methodology.

The Replication and Licensing Framework™ has been developed to address this challenge.

Its purpose is to provide a structured approach through which the methodology can be reproduced responsibly while preserving the principles, standards, and operational architecture that define it. The framework establishes what must remain constant, what may adapt to local context, and how organisations and individuals can participate in the methodology without compromising its integrity.

In this way, replication becomes more than expansion.

It becomes the disciplined stewardship of a methodology whose central asset is trust.

8.2 Why Replication Matters

The challenges that informed the development of the Jollof Nights™ Methodology are not confined to a single organisation or community. Across different places, cultures, and population groups, many people continue to experience social isolation, loneliness, emotional burden, health inequalities, and limited engagement with opportunities for prevention. Although these challenges present differently from one community to another, they often share a common characteristic: meaningful support is less likely to occur where trusted relationships are absent.

At the same time, trusted relationships already exist within many communities.

Barbershops develop trust through repeated contact with clients. Faith organisations often build trust through long-standing relationships with congregations. Sports clubs, youth organisations, universities, community centres, neighbourhood groups, and family networks all possess varying forms of social trust that have developed over time through familiarity, consistency, and shared experience.

The methodology recognises these environments not simply as places where people gather, but as locations where trust has already accumulated.

This observation changes the starting point for prevention.

Rather than asking how trust can be built around a newly introduced intervention, the methodology asks where trust already exists and how it can be activated to support earlier engagement, earlier conversation, and earlier action. This represents a different way of thinking about prevention because it begins with an existing community asset rather than creating an entirely new system around a specific programme.

Replication is not pursued simply to increase organisational reach. Its purpose is to preserve methodological integrity while enabling trusted environments to participate in a shared prevention infrastructure.

This approach also supports long-term sustainability.

Communities differ in their culture, language, traditions, and preferred ways of gathering. Those differences should not prevent them from participating in a shared methodology. Equally, adaptation should not come at the expense of methodological consistency. Responsible replication therefore requires a framework that distinguishes between the elements that define the methodology and those that may legitimately adapt to local context.

The Replication and Licensing Framework™ has been designed to provide that balance.

Its purpose is to enable the methodology to grow without losing the principles that underpin its effectiveness. As additional trusted environments join the network, each contributes to a wider Human Connection Infrastructure For Prevention™ while maintaining the relational foundations that make prevention possible within their own communities.

Replication is therefore not simply about increasing the number of programmes being delivered.

It is about increasing the number of trusted environments capable of activating prevention through a shared methodological framework.

8.3 The Replication Principle™

The Replication Principle™ establishes the central rule governing the expansion of the Jollof Nights™ Methodology.

The methodology is not replicated by reproducing its visible activities. It is replicated by preserving the operational pathway through which trust develops and prevention becomes possible.

This distinction is essential because visible activities vary naturally between communities. Food differs. Language differs. Hospitality differs. Community priorities differ. The physical environment differs. These variations are expected and, in many cases, desirable. They allow the methodology to remain culturally relevant while operating across different settings.

What must remain consistent is the trust pathway.

Throughout this publication, the Trust Accumulation Model™ has demonstrated that prevention emerges through a sequence of relational conditions rather than through isolated activities. Trusted spaces create opportunities for belonging. Belonging encourages conversation. Conversation strengthens relationships. Trusted relationships increase the likelihood of disclosure. Disclosure creates opportunities for earlier action, and earlier action supports prevention.

This operational sequence remains constant irrespective of the environment in which the methodology is delivered.

For this reason, the Replication Principle™ may be summarised simply:

Trust first. Intervention second.

The methodology does not attempt to build trust around an intervention. It introduces prevention into environments where trust already exists and strengthens that trust through repeated, meaningful human connection.

Successful replication therefore depends on protecting the operational sequence rather than reproducing the outward appearance of individual sessions.

Two organisations may deliver sessions that look entirely different while remaining faithful to the methodology. Equally, two organisations may deliver events that appear almost identical while operating in ways that fundamentally depart from the methodology's underlying principles.

Replication is therefore assessed by methodological integrity rather than visual similarity.

This principle provides the foundation for every aspect of the Replication and Licensing Framework™. It informs licensing, Trust Steward Certification™, organisational governance, cultural adaptation, quality assurance, and the protection of intellectual property.

As the methodology continues to expand, the Replication Principle™ ensures that replication remains the disciplined preservation of methodological integrity rather than the uncontrolled expansion of programme activity.

For this reason, methodological fidelity takes precedence over visual similarity. Organisations may differ in culture, language, hospitality, venue, and delivery style while remaining faithful to the methodology, provided the operational trust pathway is preserved .

8.4 What Is Being Replicated?

One of the most common misunderstandings about the Jollof Nights™ Methodology is that replication involves reproducing its visible activities. This is not the case.

The methodology is not defined by a particular meal, venue, facilitator, discussion topic, or cultural expression. These elements contribute to delivery, but they do not constitute the methodology itself. They may differ between communities without altering the operational logic that underpins the model.

What is replicated is the structured trust pathway through which trusted human connection creates opportunities for prevention.

Throughout this publication, the methodology has demonstrated that prevention emerges through a sequence of relational conditions rather than through isolated activities. Trusted environments encourage participation. Participation strengthens belonging. Belonging creates opportunities for conversation. Conversation strengthens relationships. Trusted relationships increase the likelihood of disclosure.

Disclosure creates opportunities for earlier action, and earlier action supports prevention.

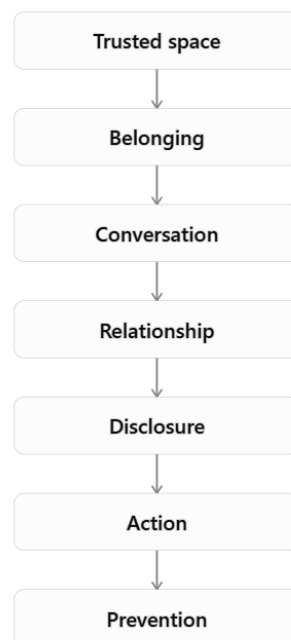
This operational sequence remains consistent irrespective of where the methodology is delivered.

The methodology therefore does not seek to replicate:

- Jollof rice
- A particular venue
- A named facilitator
- A fixed discussion topic
- A prescribed session format
- A single cultural tradition

These are expressions of the methodology rather than the methodology itself.

Instead, replication preserves the operational trust pathway through which prevention becomes possible.



Each stage creates the conditions for the next. Together they form the operational sequence that has been developed, tested, and refined throughout the evolution of the methodology.

This distinction is fundamental.

Two organisations may deliver sessions that appear very different while remaining methodologically consistent. Equally, two organisations may deliver events that appear almost identical while operating in ways that fundamentally depart from the methodology.

Replication is therefore assessed by methodological fidelity rather than visual similarity.

The methodology is replicated when the operational trust pathway is preserved. The visible expression of that pathway may legitimately vary according to culture, community, language, hospitality, and local need, provided the operational sequence remains unchanged.

This distinction allows the methodology to remain both transferable and culturally responsive while preserving the principles that define it.

8.5 Protecting Methodological Integrity

Responsible replication depends upon more than the transfer of knowledge. It requires the preservation of methodological integrity.

As the methodology expands across different organisations, communities, and cultural settings, adaptation is both inevitable and desirable. Communities differ in their traditions, languages, priorities, and ways of building relationships. A methodology that cannot adapt to local context will struggle to achieve meaningful engagement.

At the same time, unrestricted adaptation carries its own risks.

Without clear methodological boundaries, organisations may unintentionally alter the operational sequence that underpins the methodology while believing they are faithfully reproducing it. Over time, such changes can weaken consistency, reduce effectiveness, and make it increasingly difficult to distinguish the methodology from other forms of community engagement.

For this reason, the Jollof Nights™ Methodology distinguishes between those elements that define the methodology and those that may legitimately adapt to local context.

Certain components remain fundamental regardless of where the methodology is delivered.

These include:

- Trust before intervention
- Belonging before behaviour change
- Conversation before signposting
- Relationships before referral
- Prevention before crisis
- The Trust Accumulation Model™
- The Human Connection Infrastructure For Prevention™
- The operational trust pathway

Together, these components define the methodology. They provide the operational continuity that enables consistent delivery across different settings.

Other elements may adapt to reflect the needs and characteristics of individual communities.

These may include:

- Language
- Hospitality
- Food
- Venue
- Session themes
- Delivery style
- Community priorities
- Local partnerships

These adaptations do not alter the methodology provided they continue to support, rather than replace, the operational trust pathway.

Food provides a practical example of this principle.

The methodology originated through Thursday Night Jollof with Jesse d Barber™, where jollof rice became a familiar and culturally relevant means of bringing people together. Over time, the meal became associated with hospitality, belonging, and community connection. However, the methodology has never depended upon a particular cuisine.

The role of food is not to deliver prevention. Its purpose is to create an environment in which trusted human connection can develop.

For this reason, different communities may choose to express hospitality in different ways. One community may share a traditional meal, another may offer refreshments, while another may gather around tea or locally significant food. These differences represent cultural expression rather than methodological variation.

The food may change.

The hospitality may change.

The cultural context may change.

The operational trust pathway does not.

Protecting methodological integrity therefore does not require identical delivery. It requires consistent application of the principles through which trust is intentionally identified, strengthened, accumulated, and activated for prevention.

This distinction allows the methodology to remain culturally adaptable without becoming methodologically inconsistent.

Protecting methodological integrity is therefore not intended to restrict innovation. It provides the governance necessary to ensure that innovation strengthens rather than weakens the methodology.

As replication expands, this governance requires a formal framework through which organisations and individuals can apply the methodology consistently while maintaining recognised standards of delivery.

That framework is provided through the Replication and Licensing Framework™.

8.6 The Licensing Framework™

The Replication and Licensing Framework™ provides the governance structure through which the Jollof Nights™ Methodology can be implemented consistently across different organisations and community settings.

Its purpose is not to restrict participation. Its purpose is to protect methodological integrity while enabling responsible growth.

As interest in the methodology has increased, so too has the need for a structured process through which organisations can adopt, apply, and sustain the methodology without compromising the principles upon which it is built. The Licensing Framework™ has therefore been developed to provide clear standards for participation, delivery, quality assurance, and ongoing stewardship.

Licensing recognises that trusted organisations already possess valuable community relationships. Rather than replacing those relationships, the framework provides a common operational standard through which existing trust can be activated for prevention.

Participation within the framework is based on adherence to the methodology rather than organisational size, geography, or sector. A small organisation with deep community trust may be better placed to deliver the methodology than a much larger organisation with limited local credibility.

For this reason, licensing is not simply an administrative process. It is a commitment to delivering the methodology in accordance with its recognised principles, operational standards, and governance requirements.

The framework establishes four progressive levels of participation.

Level 1 – Trusted Space Partner™

Trusted Space Partners™ are organisations that provide environments where trusted human relationships already exist and where the principles of the methodology can be applied. Examples may include barbershops, universities, faith organisations, community centres, sports clubs, cultural organisations, and other trusted community settings.

Recognition as a Trusted Space Partner™ acknowledges the presence of an existing trust asset within the wider Human Connection Infrastructure For Prevention™.

Level 2 – Licensed Jollof Nights™ Delivery Partner

Licensed Delivery Partners™ are authorised to deliver Jollof Nights™ sessions using the approved methodology. Delivery Partners operate in accordance with recognised standards, safeguarding requirements, facilitator competencies, and quality assurance processes established within the methodology.

Their responsibility is to preserve the operational trust pathway while delivering culturally appropriate and locally relevant prevention activities.

Level 3 – Accredited Prevention Partner™

Accredited Prevention Partners™ are authorised to apply the Human Connection Infrastructure For Prevention™ across multiple prevention objectives. This may include mental wellbeing, physical health, family wellbeing, community engagement, research participation, public health campaigns, and other prevention activities that operate through trusted human relationships.

The focus extends beyond individual sessions towards the integration of trust as an operational asset across wider prevention systems.

Level 4 – Infrastructure Hub™

Infrastructure Hubs™ provide regional leadership for the methodology. Their responsibilities may include supporting licensed organisations, delivering Trust Steward Certification™, maintaining quality assurance standards, coordinating learning, strengthening partnerships, and contributing to the continued development of the Human Connection Infrastructure For Prevention™.

Infrastructure Hubs™ support consistency across the wider network while enabling responsible growth.

These licensing levels recognise that organisations contribute to the methodology in different ways. Some provide trusted environments. Others deliver sessions. Others coordinate regional development or integrate multiple prevention pathways. Together they form a connected infrastructure built upon shared methodological standards rather than organisational uniformity.

The Licensing Framework™ therefore provides the governance through which the methodology can expand while preserving the operational integrity that underpins its effectiveness.

8.7 Trust Steward Certification™

The effectiveness of the Jollof Nights™ Methodology depends not only upon trusted environments but also upon the individuals responsible for facilitating them.

For this reason, the methodology recognises Trust Stewardship™ as a professional discipline requiring structured preparation, supervised practice, and continuing development.

Trust Steward Certification™ is the formal process through which individuals are equipped to facilitate Jollof Nights™ in accordance with the principles, standards, and operational requirements of the methodology.

The purpose of certification is not to produce clinicians or counsellors. Nor is it to replace existing professional services.

Its purpose is to prepare trusted individuals to steward trusted human relationships responsibly while creating environments in which prevention becomes more likely.

Certification therefore focuses on the practical application of the methodology rather than professional qualification alone.

The programme equips Trust Stewards™ to understand the Trust Accumulation Model™, facilitate psychologically safe conversations, recognise appropriate boundaries, maintain safeguarding standards, support early disclosure, respond appropriately to emerging concerns, and signpost participants where additional support may be required.

Particular emphasis is placed upon creating environments characterised by dignity, respect, belonging, confidentiality, and cultural sensitivity.

Certification also reinforces an important distinction within the methodology.

Trust Stewards™ do not provide clinical intervention.

They steward trusted environments in which meaningful conversation, early recognition, and appropriate action become more likely.

Successful completion of the certification process confirms that an individual has demonstrated the competencies required to facilitate Jollof Nights™ in accordance with the recognised methodology.

Certification represents the beginning of professional stewardship rather than its completion.

Trust Stewards™ are expected to participate in ongoing reflective practice, continuous learning, quality assurance processes, and periodic review to maintain the standards associated with the methodology.

As the Human Connection Infrastructure For Prevention™ continues to expand, Trust Steward Certification™ provides a consistent standard through which communities, organisations, commissioners, and delivery partners can have confidence that the methodology is being applied with fidelity, competence, and integrity.

In this way, certification protects not only the quality of delivery but also the trust upon which the methodology depends.

Delivery of the Trust Steward Certification™ programme is supported through Chifa Lab Ltd, the learning and capability development organisation within the wider Jollof Nights™ ecosystem. Chifa Lab Ltd is responsible for developing and delivering the training, certification, and continuing professional development that equip Trust Stewards™ to activate trusted human connection safely, consistently, and in accordance with the principles of the Jollof Nights™ Methodology.

8.8 Organisational Licensing

While Trust Steward Certification™ applies to individuals, Organisational Licensing applies to institutions.

The purpose of organisational licensing is to ensure that the methodology is implemented within environments capable of supporting its operational, ethical, and governance requirements. It recognises that successful delivery depends not only upon competent facilitators but also upon organisations that are committed to preserving the standards upon which the methodology is built.

Organisational licensing is therefore based upon demonstrated readiness rather than organisational status. The methodology does not assume that large organisations are better positioned to deliver prevention than smaller community organisations. Nor does it assume that professional expertise alone is sufficient to create trusted environments.

The primary consideration is the presence of existing community trust and the organisation's willingness to apply the methodology with fidelity.

For this reason, organisations seeking to deliver the methodology are expected to demonstrate five core characteristics.

First, they should possess meaningful and established relationships within the communities they intend to serve. Trust cannot be assumed simply because an organisation is recognised or well resourced. The methodology builds upon trust that has been earned through consistent community engagement.

Second, organisations should demonstrate an ongoing presence within their communities. Sustainable prevention depends upon continuity rather than one-off activity. Communities are more likely to engage where organisations are visible, familiar, and committed over time.

Third, organisations should demonstrate values consistent with the methodology, including dignity, inclusion, respect, cultural sensitivity, and a commitment to strengthening trusted human relationships.

Fourth, organisations should be capable of providing environments that support psychological safety, appropriate safeguarding, and respectful participation.

Finally, organisations should demonstrate a willingness to uphold the operational principles, governance arrangements, and quality standards established within the Jollof Nights™ Methodology.

These expectations are intended to support responsible implementation rather than create unnecessary barriers to participation. The framework recognises that organisations contribute in different ways, but all licensed organisations share a common responsibility to preserve methodological integrity while supporting locally relevant delivery.

Organisational Licensing therefore provides a consistent governance framework through which diverse organisations can participate in a shared Human Connection Infrastructure For Prevention™ without losing the qualities that make them trusted within their own communities.

8.9 Cultural Adaptation Without Methodological Drift

One of the strengths of the Jollof Nights™ Methodology is its ability to operate across different communities while preserving a consistent operational foundation.

Communities differ in their histories, traditions, languages, cultures, and preferred ways of building relationships. A methodology that cannot adapt to these differences is unlikely to achieve meaningful engagement. Equally, unrestricted adaptation risks altering the very principles that make the methodology effective.

For this reason, the methodology distinguishes between cultural adaptation and methodological change.

Cultural adaptation enables communities to express the methodology in ways that are locally meaningful. Methodological change alters the operational trust pathway upon which the methodology depends. The former strengthens relevance. The latter compromises consistency.

Throughout the development of the methodology, local adaptation has been recognised as both necessary and valuable. Communities should be able to determine the language they use, the environments in which they meet, the hospitality they provide, the issues they prioritise, and the cultural practices that help participants feel welcome and respected.

Food provides a practical example of this principle.

The methodology originated through Thursday Night Jollof with Jesse d Barber™, where jollof rice became a culturally familiar means of bringing people together. Over time, the meal became associated with hospitality, belonging, and shared experience. However, the methodology has never depended upon jollof rice itself.

The role of food is not to deliver prevention. Its role is to support trusted human connection.

Another community may choose to gather around soup, bread, tea, coffee, fruit, or another culturally meaningful form of hospitality. These differences represent legitimate cultural adaptation because they continue to serve the same operational purpose of creating an environment in which trust can develop.

The same principle applies to language, venue, delivery style, and community priorities.

These elements may adapt according to local context provided the operational trust pathway remains preserved.

For this reason, organisations are not licensed to reproduce identical sessions. They are licensed to apply a consistent methodology through forms of delivery that remain authentic to their own communities.

This distinction protects two equally important objectives.

It preserves the integrity of the methodology while respecting the cultural identity of the communities in which it is delivered.

In doing so, the methodology avoids two common risks associated with replication. It avoids rigid standardisation that ignores local context, and it avoids unrestricted adaptation that weakens methodological consistency.

Cultural adaptation without methodological drift therefore represents one of the central governance principles of the Replication and Licensing Framework™.

As the methodology continues to expand across different organisations, communities, and cultural settings, this principle provides confidence that local expression and methodological integrity can develop together rather than in competition with one another.

8.10 Scaling Through Human Connection Infrastructure™

The long-term ambition of the Jollof Nights™ Methodology is not the replication of individual sessions. It is the development of a connected Human Connection Infrastructure For Prevention™ capable of supporting prevention across multiple trusted environments.

Throughout this publication, the methodology has demonstrated that trusted human relationships create opportunities for earlier conversation, earlier disclosure, earlier action, and earlier prevention. The Replication and Licensing Framework™ extends this learning beyond individual organisations by providing a common operational framework through which multiple trusted environments can participate in a shared prevention infrastructure.

This approach differs from conventional models of expansion. Rather than creating new services in every community, the methodology begins by identifying trusted environments that already exist. These environments may include barbershops, universities, faith organisations, sports clubs, community centres, cultural

organisations, workplaces, and other settings where trusted human relationships have developed over time.

Each participating organisation retains its own identity, culture, and community relationships. What connects them is not organisational ownership but adherence to a shared methodology and a common operational trust pathway.

As additional organisations become licensed and additional Trust Stewards™ are certified, the capacity of the wider infrastructure continues to grow. Individual trusted environments remain locally embedded while collectively contributing to a broader prevention network capable of supporting communities across different geographical locations and prevention priorities.

Within this model, prevention is no longer viewed as the responsibility of a single organisation or sector. It becomes a shared endeavour supported by a connected network of trusted people, trusted spaces, and trusted relationships operating within a common methodological framework.

Technology also plays an important supporting role within this infrastructure. As described in Part 6, Jollof Nights Connect™ does not replace trusted human relationships. It strengthens their coordination by supporting communication, community intelligence, quality assurance, evaluation, safeguarding, and organisational learning across the wider network.

The Human Connection Infrastructure For Prevention™ therefore combines local trust with shared governance. Communities remain rooted in their own relationships while benefiting from collective learning, recognised standards, and a common operational framework.

This approach enables the methodology to grow without becoming centralised. It preserves local ownership while strengthening collective capacity. As the infrastructure expands, each participating organisation contributes not only to its own community but also to the wider development of trust-led prevention.

Scaling is therefore understood not as the multiplication of programmes, but as the responsible expansion of trusted environments operating through a shared methodology.

8.11 Intellectual Property Protection

The Jollof Nights™ Methodology is the result of sustained observation, community practice, iterative development, and methodological refinement undertaken over several years. The operational architecture presented throughout this publication reflects that cumulative process of learning.

For this reason, the methodology is protected as intellectual property.

Protection does not extend to general community activities such as sharing food, holding conversations, or bringing people together. These are longstanding social practices that exist independently of the methodology.

What is protected is the structured operational architecture through which trust is intentionally identified, strengthened, accumulated, stewarded, organised, and activated to create opportunities for prevention.

This includes the Trust Accumulation Model™, Trust Stewardship™, the operational trust pathway, the Human Connection Infrastructure For Prevention™, the Replication and Licensing Framework™, Jollof Nights Connect™, associated training frameworks, evaluation systems, governance processes, digital infrastructure, and future methodological developments arising from this body of work.

Participation within the licensing framework grants permission to apply the methodology in accordance with agreed standards and governance arrangements. It does not transfer ownership of the methodology or the intellectual property associated with it.

Ownership of the methodology and its protected components remains with Ndukauba Ltd.

The purpose of intellectual property protection is not to restrict community participation or collaboration. It is to preserve methodological integrity, support responsible replication, and ensure that communities, partners, commissioners, and practitioners can have confidence that the methodology is being applied consistently and in accordance with recognised standards.

Protection also safeguards the trust that communities place in the methodology. Poor implementation, inconsistent practice, or unauthorised modification has the potential to undermine confidence not only in individual delivery partners but also in the wider Human Connection Infrastructure For Prevention™.

For this reason, intellectual property protection should be understood as an integral component of governance rather than a separate legal consideration. It supports quality assurance, responsible licensing, and the long-term stewardship of the methodology.

The Replication and Licensing Framework™ therefore concludes with a simple proposition.

The Jollof Nights™ Methodology is designed to be shared, adopted, and expanded through responsible partnership. Its growth depends upon preserving the operational trust pathway, maintaining methodological integrity, and protecting the intellectual property that enables the methodology to remain consistent as it develops across different organisations, communities, and cultural settings.

The next part of this publication examines the scientific foundations that support many of the observations described throughout the methodology. While the preceding chapters explain how trusted human connection functions within the methodology, Part 9 explores why these patterns are consistent with established evidence from neuroscience, attachment theory, social capital, psychological safety, and prevention science.

PART 9: SCIENTIFIC FOUNDATIONS OF THE JOLLOF NIGHTS™ METHODOLOGY

9.1 Introduction

The Jollof Nights™ Methodology did not originate from academic theory. It emerged through sustained community practice, repeated observation, experimentation, and the gradual refinement of ideas over several years. The methodology was developed by working alongside people within trusted community environments and observing how trusted human relationships appeared to influence participation, belonging, conversation, disclosure, and action.

Only after these patterns had become consistently visible did a second question emerge.

Why were these observations occurring so consistently?

Why did people appear more willing to participate within trusted environments? Why did repeated human connection seem to strengthen belonging? Why were individuals often more willing to disclose concerns within relationships they already trusted? Why did these experiences appear to create opportunities for earlier engagement with prevention?

These questions prompted a wider exploration of established research across neuroscience, psychology, sociology, community development, and public health.

Rather than providing the foundation upon which the methodology was built, these disciplines offered a framework through which many of the methodology's practical observations could be understood.

An important contribution to this exploration came through Professor Tony Young, whose recommendation of *A General Theory of Love* directed attention towards the growing body of neuroscience examining the influence of human relationships on emotional regulation, behaviour, and wellbeing. That recommendation became an important starting point for examining whether the relational patterns repeatedly observed within the methodology were reflected within established scientific literature.

The scientific perspectives presented in this chapter are therefore not intended to prove the Jollof Nights™ Methodology.

Nor does the methodology seek to validate established scientific theory.

Instead, this chapter demonstrates that many of the observations arising from years of community practice appear consistent with existing knowledge from multiple academic disciplines. Together, these perspectives provide a scientific context within which the methodology may be more fully understood.

9.2 Human Beings Are Designed for Connection

One of the central propositions emerging from the Jollof Nights™ Methodology is that trusted human relationships play an important role in creating the conditions through which prevention becomes possible.

This proposition is consistent with a substantial body of research suggesting that human beings are fundamentally relational. Human development, emotional wellbeing, learning, resilience, and behaviour are shaped not only by individual characteristics but also by the quality of relationships experienced throughout life.

Among the most influential contributions to this field is *A General Theory of Love*, in which Thomas Lewis, Fari Amini, and Richard Lannon argue that the human brain is designed to function within relationship rather than in isolation. They propose that people continually influence one another emotionally and physiologically through ongoing interpersonal interaction. Relationships are therefore not simply social experiences; they contribute to emotional regulation, resilience, and human functioning.

Although the Jollof Nights™ Methodology was developed independently of this work, the observations arising from community practice appear consistent with its central proposition.

Across multiple trusted environments, individuals often became more willing to participate as relationships developed. Familiarity appeared to strengthen belonging. Belonging encouraged conversation. Conversation created opportunities for disclosure. Disclosure increased the likelihood of earlier action.

The methodology does not attribute these observations solely to neuroscience. Human behaviour is influenced by many interacting biological, psychological, social, and cultural factors. Nevertheless, relationship neuroscience provides a valuable context for understanding why trusted human connection may influence participation and prevention in ways that extend beyond the exchange of information alone.

For this reason, the methodology treats trusted human connection not simply as a desirable social outcome but as an operational condition that increases the likelihood of meaningful engagement with prevention.

9.3 Attachment Theory and Trusted Relationships

Attachment Theory, first developed by John Bowlby and subsequently expanded through later research, proposes that trusted relationships provide a secure foundation from which individuals explore, learn, seek support, and respond to challenge. Rather than viewing attachment solely as an aspect of early childhood development, contemporary attachment research recognises that secure relationships continue to influence behaviour throughout adult life.

A central proposition of Attachment Theory is that people are more likely to engage with uncertainty when they experience psychological security within trusted relationships. Trust reduces perceived threat, increases confidence, and creates

conditions in which individuals become more willing to communicate openly, seek assistance, and consider change.

This perspective provides an important context for understanding several observations that informed the development of the Jollof Nights™ Methodology.

Throughout the evolution of the methodology, participants rarely disclosed deeply personal concerns during initial encounters. Instead, willingness to engage generally developed through repeated positive interactions within trusted environments. Familiarity appeared to reduce uncertainty. Relationships developed gradually. As trust accumulated, individuals often became more willing to participate, discuss personal experiences, seek guidance, and support one another.

These observations are reflected within the Trust Accumulation Model™, which proposes that trust develops progressively rather than instantaneously. The methodology does not assume that disclosure can be created through information alone. Instead, it recognises that meaningful conversation often emerges only after trusted relationships have had sufficient opportunity to develop.

Attachment Theory therefore offers a useful theoretical perspective through which these observations may be interpreted. While the methodology does not claim to test or extend Attachment Theory itself, both perspectives recognise that trusted relationships create conditions in which people become more willing to engage, explore uncertainty, disclose concerns, and take constructive action.

Within the Jollof Nights™ Methodology, this understanding reinforces an important operational principle.

Prevention is rarely the first step.

Trusted human relationships are.

9.4 Sense of Community and Belonging

Belonging occupies a central position within the Jollof Nights™ Methodology because repeated community practice consistently suggested that individuals were more willing to participate when they experienced a sense of acceptance, familiarity, and shared identity.

An established theoretical perspective that helps explain this observation is the Sense of Community framework developed by David McMillan and David Chavis. Their work proposes that healthy communities are characterised by four interconnected elements: membership, influence, integration and fulfilment of needs, and shared emotional connection. Together, these elements contribute to an individual's sense of belonging within a community.

This framework provides a useful context for understanding several aspects of the methodology.

Trusted spaces create opportunities for membership by providing environments where individuals feel welcomed rather than judged. Community-led participation gives individuals influence by allowing their experiences and perspectives to shape discussion. Repeated engagement strengthens integration through the development of supportive relationships and shared experiences. Over time, these interactions contribute to shared emotional connection, reinforcing a sense of belonging within the group.

Throughout the development of the methodology, belonging repeatedly appeared to influence participation. Individuals who felt accepted were often more willing to return, contribute to discussion, support others, and engage with prevention opportunities. Although these observations cannot establish a causal relationship, they are consistent with the proposition that belonging strengthens engagement within communities.

For this reason, the methodology does not regard belonging simply as a positive social outcome. It is understood as an important relational condition that supports participation and creates opportunities through which prevention becomes more likely.

9.5 Social Capital and Community Capacity

The role of trust within communities has also been explored extensively through the concept of social capital.

Robert Putnam describes social capital as the value created through networks of relationships, trust, reciprocity, and civic participation. Communities characterised by stronger social capital are often better positioned to cooperate, solve shared problems, and respond collectively to local challenges. While the expression of social capital differs between communities, the underlying principle remains consistent: relationships create resources that extend beyond the individuals involved.

This perspective provides an important context for understanding the development of the Jollof Nights™ Methodology.

From its earliest stages, the methodology recognised that communities already possessed valuable trust assets. Rather than introducing trust from outside, the methodology sought to identify, strengthen, and activate trust that already existed within trusted environments. In this sense, prevention begins not by creating new relationships but by recognising and building upon existing ones.

As the methodology expanded, it became increasingly apparent that trusted relationships could support a wide range of prevention objectives extending beyond their original context. This practical observation ultimately contributed to the development of the Human Connection Infrastructure For Prevention™, which treats trusted human relationships as community assets capable of supporting multiple prevention pathways.

The methodology does not claim to measure social capital in the formal sense described within academic research. However, the practical observations arising from repeated delivery are consistent with the proposition that trusted relationships strengthen the collective capacity of communities to engage with prevention.

Viewed through this perspective, trust becomes more than an individual characteristic. It represents a shared community resource capable of supporting participation, cooperation, resilience, and earlier engagement with health and wellbeing.

9.6 Salutogenesis and Prevention

Traditional approaches to health frequently begin by identifying illness, risk, or deficit before considering intervention. Aaron Antonovsky proposed an alternative perspective through his theory of salutogenesis, which asks a different question: *What enables people to remain well despite adversity?*

Rather than focusing primarily on the causes of disease, salutogenesis explores the conditions that support health, resilience, and wellbeing. This perspective shifts attention towards the strengths, resources, and relationships that enable individuals and communities to cope with life's challenges.

The philosophy underpinning the Jollof Nights™ Methodology aligns closely with this orientation.

Throughout its development, the methodology has not been organised around diagnosis or treatment. Instead, it has sought to strengthen trusted relationships, encourage belonging, create opportunities for meaningful conversation, and support earlier engagement before problems escalate into crisis. The emphasis is therefore placed upon strengthening the conditions through which prevention becomes more likely rather than responding only after significant difficulties have emerged.

This orientation does not replace the important role of clinical services or specialist intervention. Rather, it complements them by recognising that prevention often begins long before individuals enter formal systems of care.

Viewed through a salutogenic perspective, trusted human relationships may be understood as one of the community resources that contribute to wellbeing. They encourage participation, reduce isolation, strengthen resilience, and create opportunities for earlier recognition of emerging concerns.

The methodology therefore reflects a salutogenic approach by focusing on the conditions that support health rather than beginning solely with the management of illness. In doing so, it positions trusted human connection as an important community resource within a wider prevention system.

9.7 Psychological Safety and Honest Conversation

Another important perspective for understanding the Jollof Nights™ Methodology is the concept of psychological safety.

Amy Edmondson defines psychological safety as a shared belief that individuals can express themselves without fear of embarrassment, rejection, blame, or negative consequences. Within psychologically safe environments, people are generally more willing to ask questions, admit uncertainty, contribute ideas, and discuss difficult experiences.

Although psychological safety has often been examined within organisational and workplace settings, its underlying principles have broader relevance to trusted community environments.

Throughout the development of the Jollof Nights™ Methodology, meaningful conversation rarely emerged through direct questioning alone. Instead, openness appeared to develop gradually as participants became familiar with the environment, trusted those around them, and gained confidence that their experiences would be received with dignity and respect.

This observation is consistent with the proposition that psychological safety supports honest communication.

Within the methodology, psychologically safe environments are not created through formal policy alone. They emerge through repeated respectful interactions, confidentiality, cultural sensitivity, active listening, and the absence of judgement. These conditions encourage participants to contribute voluntarily rather than through obligation.

The methodology therefore regards psychological safety as an operational characteristic of trusted environments rather than simply an interpersonal quality. It creates conditions in which conversation becomes more authentic, concerns become more visible, and opportunities for earlier recognition and prevention become more likely.

While psychological safety alone cannot explain every outcome observed through the methodology, it provides an important scientific perspective for understanding why trusted environments often encourage more open and meaningful engagement.

9.8 Relationship Neuroscience and Human Connection

Among the scientific perspectives considered throughout this chapter, relationship neuroscience provides perhaps the closest theoretical context for understanding the observations that informed the development of the Jollof Nights™ Methodology.

In *A General Theory of Love*, Thomas Lewis, Fari Amini, and Richard Lannon propose that human beings continuously influence one another through relationship. Their work suggests that emotional regulation is not solely an individual process but is also shaped by repeated interpersonal interaction.

Three concepts introduced within their work are particularly relevant.

Limbic Resonance describes the capacity of individuals to become emotionally attuned to one another through relationship.

Limbic Regulation refers to the way trusted relationships can influence emotional stability, stress regulation, and psychological wellbeing.

Limbic Revision proposes that repeated positive relational experiences may gradually reshape emotional responses over time.

These concepts do not describe prevention directly. They describe the potential influence of human relationships on emotional functioning.

Viewed alongside the observations arising from the Jollof Nights™ Methodology, they provide a valuable scientific context for understanding why repeated participation within trusted environments may influence engagement, confidence, belonging, and willingness to act.

Throughout the methodology, prevention has never been understood as the consequence of a single conversation or isolated intervention. Rather, it has been observed as a gradual process supported by repeated exposure to trusted people, trusted spaces, and trusted relationships.

This observation is consistent with the broader proposition that relationships influence human behaviour through cumulative rather than instantaneous processes.

The methodology does not claim that relationship neuroscience proves its effectiveness. Instead, relationship neuroscience provides a coherent explanation for why repeated trusted human connection may contribute to many of the relational patterns observed throughout years of community practice.

This perspective strengthens the central proposition that trusted human connection represents more than a social experience. It may also function as an important enabling condition for prevention.

9.9 Scientific Implications for the Methodology

Taken together, the scientific perspectives explored throughout this chapter provide a coherent context for interpreting the observations that informed the development of the Jollof Nights™ Methodology.

Attachment Theory highlights the importance of trusted relationships.

The Sense of Community framework demonstrates the significance of belonging.

Social Capital illustrates the value created through networks of trust and reciprocity.

Salutogenesis emphasises the importance of strengthening the conditions that support health before illness develops.

Psychological Safety explains why individuals are more willing to communicate openly within respectful and trusted environments.

Relationship Neuroscience provides insight into how repeated human connection may influence emotional regulation, behaviour, and engagement.

Individually, none of these theories was used to construct the methodology.

Collectively, however, they provide an established scientific context within which many of the methodology's practical observations may be understood.

This distinction is important.

The methodology does not claim that these scientific perspectives validate every aspect of its development. Nor does it suggest that years of community practice replace empirical research.

Rather, the relationship between practice and established theory strengthens confidence that the observations described throughout this publication are neither isolated nor inconsistent with current scientific understanding.

Viewed together, these perspectives reinforce a central proposition that has emerged repeatedly throughout the methodology.

Trusted human connection should not be regarded simply as a positive social experience.

It should be recognised as an important community asset capable of creating conditions in which participation, disclosure, earlier action, and prevention become more likely.

This proposition provides the scientific context for the Human Connection Infrastructure For Prevention™ and supports the methodology's broader argument that prevention is strengthened when health systems, community organisations, and trusted local environments work together through relationships that communities already know and trust.

9.10 Alignment with Established Theory

The scientific perspectives explored throughout this chapter originate from different academic disciplines and were developed independently of the Jollof Nights™ Methodology. Attachment Theory emerged from developmental psychology. Sense of Community Theory was developed within community psychology. Social Capital was shaped through sociology and political science. Salutogenesis originated within health promotion. Psychological Safety has been extensively studied within organisational behaviour, while relationship neuroscience has contributed important insights into the biological significance of human connection.

Although these theories differ in their origins, they share a common recognition that relationships influence how individuals engage with the world around them. Trust,

belonging, social connection, psychological safety, and supportive relationships are consistently identified as important factors influencing participation, resilience, learning, wellbeing, and behaviour.

The observations that informed the development of the Jollof Nights™ Methodology appear broadly consistent with these established perspectives.

Throughout years of community practice, participants were often more willing to engage when they experienced trusted environments. Belonging appeared to strengthen participation. Repeated positive interactions appeared to deepen relationships. Trusted relationships created opportunities for more honest conversation. Meaningful conversation often preceded earlier disclosure, and disclosure created opportunities for earlier support and prevention.

These observations cannot establish causation, nor do they replace the need for formal empirical evaluation. They do, however, demonstrate a pattern of practical experience that aligns with a substantial body of existing scientific literature.

This relationship between practice and established theory strengthens the methodological proposition advanced throughout this publication.

Rather than presenting trusted human connection as an informal social benefit, the methodology proposes that it represents an important community asset capable of supporting prevention when intentionally organised, strengthened, and stewarded within trusted environments.

In this respect, the scientific literature does not serve as proof of the methodology. Instead, it provides an established theoretical context through which many of the methodology's central observations may be interpreted.

The alignment between practice and theory therefore strengthens confidence that the principles underpinning the Jollof Nights™ Methodology are consistent with broader scientific understanding while remaining open to continued empirical evaluation and refinement.

9.11 Conclusion

The Jollof Nights™ Methodology emerged through sustained community practice rather than through the application of a predetermined theoretical model. Its development was shaped by repeated observation, reflection, experimentation, and continuous refinement across trusted community environments.

Only after these practical patterns had become consistently apparent did the methodology begin to explore the scientific literature to better understand why trusted human connection appeared to influence participation, belonging, conversation, disclosure, and prevention.

The theories considered throughout this chapter do not establish the validity of the methodology, nor does the methodology seek to extend or replace them. Instead,

they provide a coherent scientific context within which many of the observations arising from community practice may be understood.

Taken together, these perspectives suggest that trusted relationships, belonging, psychological safety, social connection, and community trust are not peripheral considerations within prevention. They are important conditions that influence how individuals engage, seek support, respond to challenge, and participate in opportunities that promote health and wellbeing.

The central proposition advanced throughout this publication remains deliberately measured.

The methodology does not claim that trusted human connection alone resolves complex health, social, or economic challenges. Rather, it proposes that trusted human connection creates conditions in which earlier engagement, earlier disclosure, earlier action, and prevention become more likely.

This proposition has informed the development of the Trust Accumulation Model™, Trust Stewardship™, the Human Connection Infrastructure For Prevention™, and the Replication and Licensing Framework™ presented throughout this publication.

Together, these components represent an integrated methodology through which existing community trust may be identified, strengthened, organised, and activated in support of prevention.

The scientific perspectives presented in this chapter provide an important context for understanding why this approach may have practical value. They also reinforce the need for continued evaluation, independent research, and longitudinal study as the methodology continues to develop.

The Jollof Nights™ Methodology should therefore be understood as an evolving body of work. Its foundations have been established through community practice. Its observations are increasingly supported by established scientific perspectives. Its continued development will depend upon ongoing research, responsible implementation, transparent evaluation, and sustained partnership between communities, researchers, practitioners, commissioners, and health systems.

In this way, the methodology remains faithful to the principle that has guided its development from the beginning: prevention is strengthened when trusted human connection is recognised, protected, and intentionally organised as a community asset.

APPENDIX A

Core Methodological Principles of the Jollof Nights™ Methodology

A.1 Introduction

The Jollof Nights™ Methodology is guided by a set of core methodological principles that have emerged through sustained community practice, repeated observation, reflective learning, and continuous refinement. Together, these principles provide the philosophical, operational, and governance foundation for the methodology.

Throughout this publication, each principle has been introduced within the context of the methodology's evolution. This appendix brings those principles together as a single reference framework. They define the operational assumptions upon which the methodology is designed, implemented, replicated, evaluated, and further developed.

The principles are intended to remain consistent regardless of the community, setting, prevention objective, or cultural context in which the methodology is applied. While methods of delivery may adapt to reflect local needs, these principles provide the methodological continuity that preserves the integrity of the Jollof Nights™ Methodology.

A.2 Core Methodological Principles

Principle 1: Trust Before Intervention

Statement

The methodology begins with trust rather than intervention. Prevention is introduced through trusted environments and trusted relationships rather than expecting trust to develop around newly introduced services.

Methodological implication

Delivery should begin by identifying existing trust assets before designing prevention activity. Trust is recognised as the enabling condition through which meaningful engagement becomes possible.

Principle 2: Belonging Before Behaviour Change

Statement

Sustained behaviour change is more likely when individuals experience belonging before being asked to change behaviour.

Methodological implication

The methodology creates environments in which participants feel accepted, respected, and valued before introducing prevention messages or encouraging behavioural change.

Principle 3: Conversation Before Signposting

Statement

Meaningful prevention begins with understanding rather than direction.

Methodological implication

Conversation enables individuals to express their experiences, priorities, and concerns. Signposting becomes more relevant and more likely to be acted upon when it follows genuine understanding rather than preceding it.

Principle 4: Relationship Before Referral

Statement

Trusted relationships strengthen the likelihood that individuals will engage with opportunities for support.

Methodological implication

Referrals are most effective when they emerge from trusted human relationships rather than from isolated transactional encounters.

Principle 5: Prevention Before Crisis

Statement

The methodology seeks to create opportunities for earlier recognition, earlier conversation, and earlier action before challenges escalate into crisis.

Methodological implication

Delivery focuses upon strengthening the conditions that support prevention rather than responding only after significant problems have developed.

Principle 6: Community Before Institution

Statement

Communities possess valuable assets, trusted relationships, lived experience, and practical knowledge that should be recognised within prevention.

Methodological implication

The methodology positions communities as active partners in prevention rather than passive recipients of externally designed interventions.

Principle 7: Culture Matters

Statement

Prevention is strengthened when it is delivered in ways that respect and reflect the cultural identity of the communities involved.

Methodological implication

Local culture should inform delivery while remaining consistent with the operational principles of the methodology.

Principle 8: Human Connection Is Infrastructure

Statement

Trusted human relationships represent operational assets capable of supporting prevention across multiple community environments.

Methodological implication

The methodology treats trusted spaces, trusted people, trusted relationships, trusted conversations, and trusted action as interconnected components of a wider Human Connection Infrastructure For Prevention™.

Principle 9: Culture Before Standardisation

Statement

Methodological consistency should be preserved while allowing communities to express the methodology in culturally appropriate ways.

Methodological implication

The operational trust pathway remains constant. Language, hospitality, venue, delivery style, and cultural expression may legitimately adapt to local context without compromising methodological integrity.

Principle 10: Trust Is a Prevention Asset

Statement

Trust is recognised as a community asset that creates opportunities for participation, belonging, disclosure, action, and prevention.

Methodological implication

The methodology seeks to identify, strengthen, steward, protect, and activate trust as part of the wider prevention infrastructure.

A.3 Definitions

Trust

The confidence placed in people, places, relationships, and processes that consistently demonstrate safety, credibility, respect, and reliability.

Trusted Space

An environment in which individuals feel sufficiently safe, respected, and accepted to participate authentically.

Trust Steward

An individual equipped through the Jollof Nights™ Methodology to activate, strengthen, and steward existing trust in support of prevention while operating within recognised methodological, safeguarding, and governance standards.

Trust Stewardship™

The structured process of identifying, equipping, supporting, and sustaining trusted individuals to activate existing community trust for prevention.

Trust Accumulation

The progressive strengthening of confidence, belonging, and willingness to engage through repeated positive relational experiences.

Belonging

The experience of feeling accepted, valued, respected, and connected within a trusted community or group.

Prevention

Actions that reduce the likelihood of health, social, or wellbeing challenges escalating through earlier awareness, earlier conversation, earlier support, and earlier action.

Human Connection Infrastructure For Prevention™

A coordinated system of trusted spaces, trusted people, trusted relationships, trusted conversations, and trusted action intentionally organised to support prevention across communities.

Trust Pathway

The operational sequence through which trusted space leads to belonging, conversation, relationship, disclosure, action, and prevention.

Prevention Asset

Any individual, relationship, environment, process, or resource that increases the likelihood of earlier engagement, earlier action, and improved prevention outcomes.

Methodological Integrity

The consistent application of the operational principles, governance standards, and trust pathway that define the Jollof Nights™ Methodology regardless of setting or cultural adaptation.

APPENDIX B

Future Research Agenda and Methodological Development

B.1 Introduction

The Jollof Nights™ Methodology is presented as both a practical framework for prevention and an evolving body of knowledge. Its development began through sustained community practice, with theory and scientific interpretation following later. Throughout this publication, the methodology has been examined alongside established perspectives from neuroscience, psychology, sociology, public health, prevention science, community development, behavioural science, health creation, health equity, and human-centred design.

These perspectives provide an important context for understanding the methodology, but they also highlight opportunities for further investigation.

As the methodology continues to develop, future research will play an important role in testing, refining, and extending its propositions. This appendix outlines a programme of research priorities intended to support independent evaluation, methodological refinement, and the continued development of trust-led approaches to prevention.

The purpose of this appendix is not to present final answers. It is to identify the next stage of inquiry required to strengthen the evidence base of the Jollof Nights™ Methodology and support its responsible development across communities, institutions, health systems, and research environments.

B.2 From Community Practice to Knowledge Generation

Many methodologies originate within academic research before being implemented in practice. The Jollof Nights™ Methodology followed the opposite trajectory. It emerged through community practice, repeated observation, and continuous refinement before its underlying principles were examined alongside established scientific theory.

This progression creates an opportunity for a different form of knowledge generation.

Communities become environments in which prevention can be delivered, observed, evaluated, and continuously refined. They are not only sites of need or intervention. They are also sites of learning, evidence generation, and methodological development.

Research therefore forms part of the methodology's future development rather than serving only as retrospective validation. As the methodology continues to expand, future research can help test its assumptions, examine its mechanisms, evaluate its outcomes, and strengthen its application across different settings.

The research priorities presented in this appendix are intended to guide future collaboration between community organisations, universities, health systems, policymakers, commissioners, and research institutions.

B.3 Research Priority 1 — Measuring Trust as a Prevention Asset

Research question

Can trust be measured reliably as a prevention asset?

Rationale

The methodology proposes that trust increases the likelihood of participation, disclosure, engagement, and earlier action. If trust is to be recognised as an operational asset within prevention, reliable methods for describing, observing, and measuring trust will be required.

This research priority is central because trust sits at the foundation of the methodology. Without clearer ways to understand how trust forms, accumulates, and influences action, it becomes difficult to evaluate trust-led prevention in a systematic way.

Potential areas of investigation

- Trust measurement frameworks
- Community trust indices
- Trust accumulation indicators
- Trust network mapping
- Trust retention over time
- Trust density within communities
- Relationships between trust and prevention outcomes

Potential contribution

The development of robust trust measures could strengthen evaluation, commissioning, and prevention planning while providing a stronger evidence base for trust-led approaches. It may also support health systems and public bodies to recognise trust as a measurable prevention asset rather than an informal feature of community engagement.

B.4 Research Priority 2 — Measuring Belonging

Research question

Can belonging be measured consistently within community prevention settings?

Rationale

Belonging occupies a central position within the Trust Accumulation Model™. The methodology proposes that belonging strengthens participation, lowers emotional

barriers, and creates the conditions in which deeper conversation and disclosure become more likely.

Future research is needed to understand how belonging develops within trusted environments, how it changes over time, and how it may influence engagement with prevention.

Potential areas of investigation

- Psychological safety measures
- Social connectedness measures
- Community attachment measures
- Relationship quality indicators
- Participation patterns
- Sense of belonging over time
- Links between belonging and disclosure

Potential contribution

Improved understanding of belonging may strengthen knowledge of the relational conditions that support prevention. It may also help partners, researchers, and commissioners assess whether trusted environments are creating the conditions required for meaningful engagement, rather than only measuring attendance or activity volume.

B.5 Research Priority 3 — Trust and Help-Seeking Behaviour

Research question

Does trusted human connection influence willingness to seek support?

Rationale

Throughout the development of the Jollof Nights™ Methodology, participants frequently appeared more willing to seek support after trusted relationships had developed. This observation was evident across different settings, prevention topics, and participant groups. However, while these observations informed the methodology, further research is required to determine the extent to which trusted human connection influences help-seeking behaviour and engagement with formal and informal sources of support.

Understanding this relationship has important implications for prevention. If trusted relationships encourage earlier help-seeking, they may also contribute to earlier intervention and improved prevention outcomes.

Potential areas of investigation

- Referral uptake
- Self-referral rates
- Primary care engagement

- Community support utilisation
- NHS service engagement
- Voluntary sector engagement
- Barriers to help-seeking
- Timing of support-seeking following trusted community engagement

Potential contribution

Research in this area may strengthen understanding of how trusted human connection influences engagement with support pathways. It may also inform the design of future prevention programmes by identifying practical approaches that encourage earlier help-seeking through trusted community environments.

B.6 Research Priority 4 — Trusted Human Connection and Prevention Outcomes

Research question

Does trusted human connection influence measurable prevention outcomes?

Rationale

A central proposition of the methodology is that trusted human connection creates conditions in which prevention becomes more likely. While the methodology does not claim that trust alone determines prevention outcomes, it proposes that trust increases the likelihood of earlier participation, earlier disclosure, earlier action, and earlier engagement with opportunities that support health and wellbeing.

Future research should explore whether these observations can be demonstrated using qualitative, quantitative, and mixed-methods approaches.

Potential areas of investigation

- Mental wellbeing indicators
- Blood pressure awareness and monitoring
- Screening participation
- Health literacy
- Community resilience
- Social isolation
- Behaviour change
- Earlier intervention
- Participant retention
- Sustained community engagement

Potential contribution

Evidence in this area may strengthen understanding of how trusted human connection contributes to prevention. It may also support the integration of trust-led approaches within wider public health and community prevention strategies.

B.7 Research Priority 5 — Human Connection as Infrastructure for Prevention

Research question

Can trusted human connection be understood as operational infrastructure for prevention?

Rationale

One of the central propositions advanced throughout this publication is that trusted human connection should be recognised as infrastructure rather than simply as a positive social outcome. The Human Connection Infrastructure For Prevention™ proposes that trusted spaces, trusted people, trusted relationships, trusted conversations, and trusted action collectively form an operational system capable of supporting prevention across communities.

This proposition represents a significant departure from traditional prevention models and requires further investigation.

Potential areas of investigation

- Community infrastructure mapping
- Trust network analysis
- Community systems modelling
- Infrastructure economics
- Cross-sector collaboration
- Prevention ecosystem design
- Community asset integration
- Infrastructure resilience

Potential contribution

Research may contribute to a broader understanding of how trusted human connection functions within prevention systems and whether it can be recognised, supported, and developed as community infrastructure alongside more traditional forms of public infrastructure.

B.8 Research Priority 6 — The Economic Value of Trusted Human Connection

Research question

What economic value is created through trusted human connection?

Rationale

Health systems routinely evaluate financial expenditure, clinical outcomes, and service utilisation. Comparatively little attention has been given to the economic

contribution of trusted human relationships and their potential influence on prevention.

If trusted human connection contributes to earlier engagement, earlier intervention, improved participation, and reduced escalation into crisis, there may also be important economic implications that warrant further investigation.

Understanding this relationship may help commissioners, policymakers, and health systems make more informed decisions regarding investment in community-based prevention.

Potential areas of investigation

- Cost avoidance
- Earlier intervention savings
- Reduced crisis response
- Prevention efficiency
- Community resilience
- Social return on investment
- Economic evaluation of trust-led prevention
- Resource utilisation across health and community systems

Potential contribution

Research in this area may provide a stronger economic case for investing in trusted community relationships as part of prevention infrastructure. It may also support future commissioning decisions by demonstrating how trusted human connection contributes to both social value and long-term system sustainability.

B.9 Research Priority 7 — Trusted Human Connection and Health Inequalities

Research question

Can trusted human connection contribute to reducing health inequalities?

Rationale

Many health inequalities are influenced by factors that extend beyond clinical care, including mistrust, social isolation, cultural barriers, limited engagement with services, and unequal access to prevention opportunities. The Jollof Nights™ Methodology proposes that trusted community environments may help address some of these barriers by creating conditions in which individuals feel more willing to participate, engage, and seek support.

Future research is required to examine whether trust-led prevention approaches can contribute to improving engagement among populations that have historically experienced poorer health outcomes or lower levels of participation in preventative services.

Potential areas of investigation

- Community trust and health inequalities
- Prevention engagement among underserved populations
- Cultural responsiveness in prevention
- Barriers to participation
- Community-led prevention models
- Trust and health equity

Potential studies may include, but are not limited to:

- Black communities
- Minority ethnic communities
- Men
- Young people
- Older adults
- Marginalised populations

Potential contribution

Research in this area may strengthen understanding of how trusted human connection can support more equitable access to prevention and contribute to reducing avoidable health inequalities through community-led approaches.

B.10 Research Priority 8 — Human Connection and Digital Technology

Research question

How can digital systems strengthen trusted human connection without replacing it?

Rationale

Throughout this publication, Jollof Nights Connect™ has been presented as a digital layer that supports, rather than substitutes for, trusted human relationships. The methodology proposes that technology is most effective when it strengthens existing trust rather than attempting to create trust independently.

As digital health services continue to expand, understanding how technology can complement trusted community relationships has become increasingly important.

Potential areas of investigation

- Digital trust
- Hybrid engagement models
- Community platforms
- Human-centred technology
- Relationship-preserving digital design
- Digital inclusion
- Ethical community intelligence

Potential contribution

Research may inform the development of digital prevention systems that preserve the relational foundations of community engagement while improving coordination, learning, evaluation, and accessibility across prevention infrastructure.

B.11 Research Priority 9 — International Application of the Methodology

Research question

Can the Jollof Nights™ Methodology be applied across different cultural and international contexts?

Rationale

Although the methodology originated within African and Caribbean communities in London, its operational principles are based upon trusted human connection rather than any single cultural tradition. This raises the possibility that the methodology may be transferable across different populations while maintaining its methodological integrity.

Future research is required to understand how the methodology may be adapted across different settings without altering the operational trust pathway that defines it.

Potential areas of investigation

- Cross-cultural adaptation
- International implementation
- Different age groups
- Alternative prevention priorities
- Educational settings
- Workplace settings
- Faith communities
- Health systems in different countries

Potential contribution

Research in this area may strengthen understanding of how the Cultural Adaptation Principle™ supports international implementation while preserving methodological consistency across diverse communities and prevention priorities.

B.12 Research Priority 10 — Trust as a Strategic Community Asset

Research question

What are the implications of managing trust as a strategic community asset?

Rationale

The Jollof Nights™ Methodology proposes that trust should be intentionally recognised, strengthened, stewarded, protected, and organised rather than treated as an incidental outcome of successful programmes. If trust is understood as an operational asset, it also requires appropriate governance, investment, and long-term stewardship.

This proposition has implications not only for community organisations but also for health systems, commissioners, policymakers, and institutions seeking sustainable approaches to prevention.

Potential areas of investigation

- Trust governance
- Trust Stewardship™
- Trust investment
- Trust maintenance
- Trust ecosystem development
- Community governance models
- Long-term infrastructure stewardship

Potential contribution

Research may contribute to the development of governance approaches that recognise trusted human connection as a strategic community resource capable of supporting long-term prevention, resilience, and system sustainability.

B.13 Development Priorities

The continued development of the Jollof Nights™ Methodology will be guided by five strategic priorities.

1. Methodological Development

Continuous refinement through implementation, reflective practice, evaluation, and learning.

2. Evidence Generation

Strengthening the qualitative, quantitative, and mixed-methods evidence supporting the methodology.

3. Infrastructure Expansion

Expanding the Human Connection Infrastructure For Prevention™ through trusted partnerships, licensed delivery, and Trust Stewardship™.

4. Academic Partnership

Working collaboratively with universities, researchers, and knowledge institutions to support independent evaluation and methodological development.

5. Policy Development and Translation

Contributing to policy discussions relating to prevention, community infrastructure, health creation, health equity, and trust-led approaches to public health.

B.14 Closing Reflection

The Jollof Nights™ Methodology remains an evolving body of work. Its foundations were established through sustained community practice, its propositions have been examined alongside established scientific perspectives, and its continued development will depend upon ongoing implementation, independent evaluation, academic collaboration, and community partnership.

The research priorities presented in this appendix should not be regarded as a definitive research programme. Rather, they provide a structured agenda for future enquiry through which the methodology may continue to develop while remaining open to critical examination, refinement, and learning.

Researchers, practitioners, community organisations, commissioners, policymakers, and academic institutions are invited to test, challenge, refine, and extend the propositions presented throughout this publication.

In doing so, the methodology can continue to evolve while remaining grounded in the operational principles that define its identity.

The central question that has guided the development of the methodology therefore remains unchanged:

What role can trusted human connection play in creating the conditions through which prevention becomes more likely?

The answer to that question will continue to emerge through responsible practice, independent research, meaningful partnership, and sustained engagement with the communities that inspired the methodology from the beginning.

APPENDIX C

Integrated Architecture of the Jollof Nights™ Methodology

C.1 Purpose of this Appendix

This appendix provides a consolidated overview of the integrated architecture of the Jollof Nights™ Methodology. Rather than repeating the detailed explanations presented throughout the main body of this publication, it brings together the methodology's principal models, frameworks, and operational concepts into a single, coherent view.

The methodology is not intended to be understood as a collection of independent frameworks. Each model performs a distinct function within one integrated prevention methodology. Together, they explain how trusted human connection is identified, strengthened, organised, activated, and translated into earlier action and improved prevention outcomes.

This appendix should therefore be read as a reference guide to the methodology's overall architecture.

C.2 The Integrated Methodology Architecture

The Jollof Nights™ Methodology operates through a progressive sequence of interconnected models and operational systems.



Figure C.1. Integrated Architecture of the Jollof Nights™ Methodology

The diagram illustrates the complete operational pathway through which trust is transformed from an existing community asset into measurable prevention outcomes.

C.3 Relationship Between the Core Models

Each model within the methodology performs a specific function while remaining dependent upon the others.

Trust Asset Formation™ establishes trust as a strategic community asset capable of supporting prevention.

The Trust Accumulation Model™ explains how trust develops progressively through trusted spaces, belonging, conversation, relationships, disclosure, and action.

The Trust Activation Principle™ demonstrates why prevention should begin where trust already exists rather than attempting to create trust around services.

Trust Stewardship™ equips trusted individuals with the knowledge, skills, and confidence required to activate existing trust safely and consistently.

Community-Led Agenda Setting™ ensures that prevention conversations emerge from community priorities before specialist expertise is introduced.

Jollof Nights™ Centres provide the trusted operational environments within which the methodology is delivered.

The Human Connection Infrastructure For Prevention™ coordinates multiple trusted people, trusted spaces, trusted relationships, and trusted conversations into a scalable prevention infrastructure.

Together, these components function as one integrated methodology rather than a series of independent frameworks.

C.4 The Methodology as One Integrated System

The strength of the Jollof Nights™ Methodology does not lie in any individual framework. Its strength lies in the interaction between all of its components.

Trust is first recognised as an existing community asset.

That trust is progressively accumulated through repeated positive interactions.

Trusted individuals are then equipped to activate existing trust through safe, culturally relevant conversations.

Trusted community environments provide the setting within which these conversations occur.

Multiple trusted environments are then coordinated through the Human Connection Infrastructure For Prevention™, enabling prevention activity to operate consistently across different communities while remaining responsive to local priorities.

The methodology therefore functions as one integrated operational system through which trusted human connection becomes an intentional mechanism for prevention.

C.5 Relationship to Jollof Nights Connect™

The Jollof Nights™ Methodology provides the methodological foundation for delivery.

Jollof Nights Connect™ provides the infrastructure through which multiple Jollof Nights™ Centres, Trust Stewards™, community partners, and prevention activities can operate as one coordinated Human Connection Infrastructure For Prevention™.

The methodology explains how prevention is delivered.

Jollof Nights Connect™ explains how that methodology is coordinated, supported, measured, and scaled across multiple trusted community settings.

Together, they form complementary components of the same prevention ecosystem.

C.6 Closing Summary

The Jollof Nights™ Methodology should be understood as a single integrated prevention methodology rather than a collection of individual models or frameworks.

Its contribution lies not in any one component alone, but in the intentional integration of trust, belonging, conversation, stewardship, community leadership, and infrastructure into one coherent approach to prevention.

By recognising trusted human connection as a strategic community asset, the methodology provides a practical framework through which communities, practitioners, and institutions can work together to support earlier disclosure, earlier action, and improved prevention outcomes.

APPENDIX D

Operational Systems of the Jollof Nights™ Methodology

D.1 Introduction

The Jollof Nights™ Methodology is implemented through a series of interconnected operational systems that translate its core principles into practical delivery. While the preceding chapters and appendices describe the theoretical foundations, methodological models, and research agenda, this appendix explains how the methodology functions in practice.

Each operational system performs a distinct role within the wider Human Connection Infrastructure For Prevention™. Individually, these systems support different aspects of delivery. Collectively, they provide the organisational architecture through which trusted human connection is identified, strengthened, coordinated, evaluated, and translated into prevention outcomes.

Although each system is presented separately for clarity, they operate as an integrated operational framework. Together, they enable the methodology to move from individual trusted relationships to coordinated community prevention infrastructure.

D.2 Jollof Nights™ Centres

Purpose

Jollof Nights™ Centres provide the trusted environments in which the methodology is delivered through sustained community engagement.

Operational Function

Each centre functions as a Trust Activation Point™ where trusted relationships are strengthened through belonging, conversation, repeated participation, and community-led prevention activities.

Depending on local context, Jollof Nights™ Centres may include:

- Barbershops
- Universities and colleges
- Faith organisations
- Football clubs
- Community centres
- Family hubs
- Workplace settings
- Other trusted community environments

While the setting may differ, every centre operates through the same methodological principles and operational pathway.

Methodological Contribution

Jollof Nights™ Centres provide the physical and relational foundation of the methodology. They create the trusted environments in which prevention becomes possible and represent the primary points through which communities engage with the wider Human Connection Infrastructure For Prevention™.

D.3 Trust Stewardship™ System

Purpose

The Trust Stewardship™ System identifies, equips, and supports trusted individuals who are capable of activating existing community trust for prevention.

Operational Function

The system provides a structured approach to Trust Steward training, reflective practice, safeguarding awareness, facilitation skills, and ongoing professional development. Trust Stewards™ are supported to recognise opportunities for earlier conversation, encourage participation, facilitate appropriate signposting, and strengthen community prevention while operating within the governance standards of the methodology.

Methodological Contribution

Rather than creating trust from the beginning, the Trust Stewardship™ System strengthens trust that already exists within communities. It provides the operational mechanism through which trusted individuals become active contributors to prevention infrastructure.

D.4 Trust Accumulation System

Purpose

The Trust Accumulation System supports the progressive development of trusted relationships through repeated positive engagement.

Operational Function

The system reflects the operational pathway of the Trust Accumulation Model™, recognising that belonging, conversation, relationship development, disclosure, and action strengthen through repeated participation rather than isolated events.

The system encourages continuity of engagement while recognising that trust develops at different rates for different individuals.

Methodological Contribution

The Trust Accumulation System provides the relational engine of the methodology. It explains how repeated community engagement contributes to stronger relationships, increased participation, earlier disclosure, and greater opportunities for prevention.

D.5 Community Intelligence System

Purpose

The Community Intelligence System converts trusted conversations into structured community learning.

Operational Function

Themes emerging through Jollof Nights™ sessions are documented, organised, and analysed to identify recurring community priorities, emerging risks, lived experiences, and opportunities for prevention.

Where appropriate, aggregated community intelligence may inform commissioners, local authorities, NHS partners, researchers, and community organisations while protecting participant confidentiality and maintaining ethical governance.

Methodological Contribution

The Community Intelligence System transforms trusted conversation into practical community insight. It enables prevention to remain responsive to lived experience while supporting continuous learning and informed decision-making across partner organisations.

D.6 Prevention Pathway System

Purpose

The Prevention Pathway System translates trusted human connection into practical prevention activity.

Operational Function

As trust develops, opportunities emerge for participants to engage with a range of prevention activities appropriate to their circumstances and community priorities. These may include:

- Mental wellbeing conversations
- Blood pressure awareness and monitoring
- Health education
- Research participation
- Family wellbeing support
- Behaviour change initiatives
- Appropriate signposting

- Connection to community and statutory services

The activities themselves may vary, but the operational pathway through which they are introduced remains consistent.

Methodological Contribution

The Prevention Pathway System demonstrates how trust is translated into earlier engagement, earlier action, and practical prevention without separating intervention from the trusted relationships through which it is delivered.

D.7 Jollof Nights Connect™ Coordination System

Purpose

Jollof Nights Connect™ provides the coordination layer that links multiple trusted environments through one shared methodology.

Operational Function

The platform supports communication, coordination, quality assurance, evidence collection, organisational learning, Trust Steward support, and the consistent implementation of the methodology across multiple delivery settings.

By connecting individual Jollof Nights™ Centres through a shared operational framework, Jollof Nights Connect™ enables multiple prevention pathways to operate as a coordinated Human Connection Infrastructure For Prevention™.

Methodological Contribution

Jollof Nights Connect™ transforms individual centres into an interconnected prevention network. It strengthens consistency, scalability, accountability, and shared learning while preserving local community ownership.

D.8 Commissioner Reporting System

Purpose

The Commissioner Reporting System provides structured evidence demonstrating the implementation and outcomes of the methodology.

Operational Function

The system enables commissioners, funders, NHS organisations, local authorities, researchers, and partner organisations to receive aggregated reports relating to participation, delivery, prevention activity, emerging themes, community priorities, and organisational learning.

Reporting is designed to support transparency, accountability, continuous improvement, and evidence-informed decision-making while maintaining participant confidentiality and ethical governance.

Methodological Contribution

The Commissioner Reporting System strengthens accountability and supports long-term investment by demonstrating how trusted community relationships contribute to prevention. It also enables learning to be shared across organisations while reducing fragmented approaches to community engagement.

D.9 Integrated Operational Architecture

The operational systems described throughout this appendix should not be understood as independent components. Each performs a distinct operational function while contributing to a single integrated prevention infrastructure.

Jollof Nights™ Centres provide trusted environments for delivery.

The Trust Stewardship™ System equips trusted individuals.

The Trust Accumulation System explains how trust develops through repeated engagement.

The Community Intelligence System transforms trusted conversation into structured learning.

The Prevention Pathway System translates trust into practical prevention activity.

Jollof Nights Connect™ coordinates delivery across multiple trusted environments.

The Commissioner Reporting System provides evidence, accountability, organisational learning, and continuous improvement.

Together, these operational systems form the organisational architecture of the Jollof Nights™ Methodology. They enable trusted human connection to move beyond isolated community relationships and function as a coordinated Human Connection Infrastructure For Prevention™, capable of supporting prevention across diverse communities while maintaining methodological consistency, operational integrity, and local ownership.

APPENDIX E

Operational Evidence and Intelligence Systems of the Jollof Nights™ Methodology

E.1 Introduction

The Jollof Nights™ Methodology is supported by a series of operational evidence and intelligence systems that enable trust-led prevention to be implemented, monitored, evaluated, and continuously refined. These systems extend the methodology beyond community delivery by providing structured approaches to identifying trust, assessing readiness, capturing evidence, generating community intelligence, and supporting organisational learning.

Collectively, these operational tools form the evidence architecture of Jollof Nights Connect™. They enable trusted human connection to be understood not only as a relational process but also as a measurable operational asset capable of informing implementation, quality assurance, evaluation, commissioning, and continuous methodological development.

Although each system performs a distinct operational function, they are designed to operate as an integrated framework. Together, they support the identification, activation, measurement, stewardship, and long-term development of trusted human connection as part of the wider Human Connection Infrastructure For Prevention™.

Unless otherwise stated, the systems described throughout this appendix are proprietary operational tools developed as part of the Jollof Nights™ Methodology and form part of its protected operational architecture.

E.2 Trust Audit™

Purpose

The Trust Audit™ is the first-stage diagnostic tool used to identify existing trust assets within a community, organisation, institution, or local environment before prevention activity is introduced.

Operational Function

Rather than beginning with services or programmes, the Trust Audit™ examines where trusted relationships already exist and how those relationships may contribute to prevention. The audit considers both formal and informal sources of community trust and provides a structured approach to identifying trusted environments capable of supporting engagement.

The Trust Audit™ may be applied across a range of settings, including barbershops, faith organisations, educational institutions, community organisations, workplaces, sports clubs, and other trusted community environments.

Methodological Contribution

The Trust Audit™ operationalises the principle of **Trust Before Intervention** by ensuring that prevention begins with existing community strengths rather than assuming trust must first be created. It provides the entry point through which communities are mapped, trust assets are recognised, and opportunities for trust-led prevention are identified.

E.3 Trust Readiness Assessment™

Purpose

The Trust Readiness Assessment™ evaluates whether an identified trusted space, trusted individual, or community environment is sufficiently prepared to activate trust for prevention.

Operational Function

Following completion of the Trust Audit™, the Trust Readiness Assessment™ examines the practical conditions required to implement the methodology safely and effectively. Assessment may include factors such as community credibility, leadership commitment, safeguarding arrangements, relational stability, organisational readiness, facilitator capacity, and alignment with the principles of the Jollof Nights™ Methodology.

The assessment does not measure the quantity of trust alone. It evaluates whether existing trust can be responsibly activated within the governance framework of the methodology.

Methodological Contribution

The Trust Readiness Assessment™ provides an important quality assurance function within the methodology. It helps ensure that prevention is introduced within environments that possess both trusted relationships and the operational capacity to steward those relationships responsibly. In doing so, it strengthens methodological consistency while supporting safe, ethical, and sustainable implementation across different delivery settings.

E.4 Trust Density Index™ (TDI™)

Purpose

The Trust Density Index™ (TDI™) provides a structured approach to assessing the concentration, distribution, and strength of trust within a defined community, organisation, or trusted environment. It is designed to help understand the relational capacity available to support trust-led prevention.

Operational Function

The Trust Density Index™ evaluates a range of relational indicators that collectively describe the quality and depth of trust within a community. Rather than relying on a single measure, the index considers multiple dimensions of trusted human connection to provide a more comprehensive understanding of community readiness.

Core measures may include:

- Relationship longevity
- Frequency of interaction
- Repeat attendance
- Familiarity between participants
- Emotional safety
- Openness during conversation
- Informal disclosure patterns
- Community connectedness

The Trust Density Index™ is intended to support implementation planning, comparative evaluation, and longitudinal assessment of trust within participating communities.

Methodological Contribution

The Trust Density Index™ translates the concept of trust into a structured operational measure. It supports the methodology by providing a consistent approach to understanding where trust is concentrated, how it changes over time, and how it may influence participation, engagement, and prevention. It also provides an evidence-informed foundation for future research into trust as a measurable prevention asset.

E.5 Trust Retention Score™ (TRS™)

Purpose

The Trust Retention Score™ (TRS™) evaluates the extent to which trust is sustained, strengthened, and retained over time through continued participation and repeated community engagement.

Operational Function

While the Trust Density Index™ provides a snapshot of trust within a community, the Trust Retention Score™ examines the continuity of that trust over time. It considers whether participants continue to engage, maintain relationships, and demonstrate behaviours consistent with long-term community trust.

Core measures may include:

- Return attendance
- Repeat participation
- Long-term engagement

- Community loyalty
- Peer invitation behaviour
- Continued relationship with Trust Stewards™
- Sustained participation across multiple sessions

The Trust Retention Score™ supports ongoing evaluation of relational continuity rather than one-off engagement.

Methodological Contribution

The Trust Retention Score™ recognises that prevention depends not only on establishing trust but also on maintaining it. By measuring trust over time, the methodology is able to evaluate the sustainability of community relationships and the continued effectiveness of trust-led prevention. The score also contributes to organisational learning by identifying factors that strengthen or weaken long-term engagement.

E.6 Prevention Conversion Pathway™ (PCP™)

Purpose

The Prevention Conversion Pathway™ (PCP™) provides a structured framework for understanding how trusted human connection is translated into practical prevention outcomes.

Operational Function

The pathway follows the progression through which trusted conversation may lead to increasing levels of awareness, engagement, reflection, and action. While individual journeys differ, the pathway provides a consistent operational framework for observing how prevention develops through trusted relationships.

Operational Pathway



Methodological Contribution

The Prevention Conversion Pathway™ demonstrates how trust-led engagement can develop into meaningful prevention activity without separating intervention from the relationships through which it is delivered. It provides an operational framework for

understanding participant progression while supporting evaluation, quality assurance, and continuous methodological refinement.

The pathway should not be interpreted as a fixed sequence through which every participant must pass. Rather, it represents a conceptual framework describing the progression most commonly observed during the development of the methodology and provides a consistent basis for implementation, evaluation, and future research.

E.7 Community Intelligence Capture™ (CIC™)

Purpose

Community Intelligence Capture™ (CIC™) provides a structured approach to identifying, recording, and analysing recurring themes, emerging concerns, and lived experiences shared within trusted community environments.

Operational Function

The system captures aggregated community learning generated through trusted conversations rather than individual clinical information. It enables facilitators and partner organisations to identify recurring patterns that may inform prevention planning, service improvement, community engagement, and future programme development while maintaining participant confidentiality and ethical governance.

Key intelligence domains may include:

- Mental wellbeing
- Family pressures
- Financial challenges
- Housing concerns
- Youth vulnerability
- Health inequalities
- Community tensions
- Loneliness
- Social isolation
- Emerging prevention priorities

Community Intelligence Capture™ focuses on identifying community-level trends rather than producing individual case records.

Methodological Contribution

Community Intelligence Capture™ transforms trusted conversation into structured community learning. It enables the methodology to generate practical intelligence that supports commissioners, community organisations, health systems, researchers, and policymakers while ensuring that community voices remain central to prevention planning.

E.8 Trust Steward Training™

Purpose

Trust Steward Training™ equips trusted individuals with the knowledge, skills, and operational frameworks required to activate existing community trust responsibly in support of prevention.

Operational Function

The training programme prepares Trust Stewards™ to facilitate psychologically safe conversations, recognise opportunities for earlier intervention, maintain appropriate boundaries, understand safeguarding responsibilities, support signposting, and contribute to Community Intelligence Capture™.

Core training areas include:

- Active listening
- Psychological safety
- Safeguarding
- Professional boundaries
- Appropriate signposting
- Community intelligence
- Early intervention principles
- Relational leadership
- Reflective practice
- Methodological integrity

Training is accompanied by ongoing support, reflective learning, and quality assurance to promote consistency across different delivery environments.

Methodological Contribution

Trust Steward Training™ provides the capability-building component of the methodology. It ensures that existing trust is strengthened through consistent practice rather than assumed to be sufficient on its own. In doing so, the training supports safe implementation while protecting the integrity of the methodology across all licensed delivery settings.

E.9 Human Connection Infrastructure Operating System for Prevention™ (HCI-OS™)

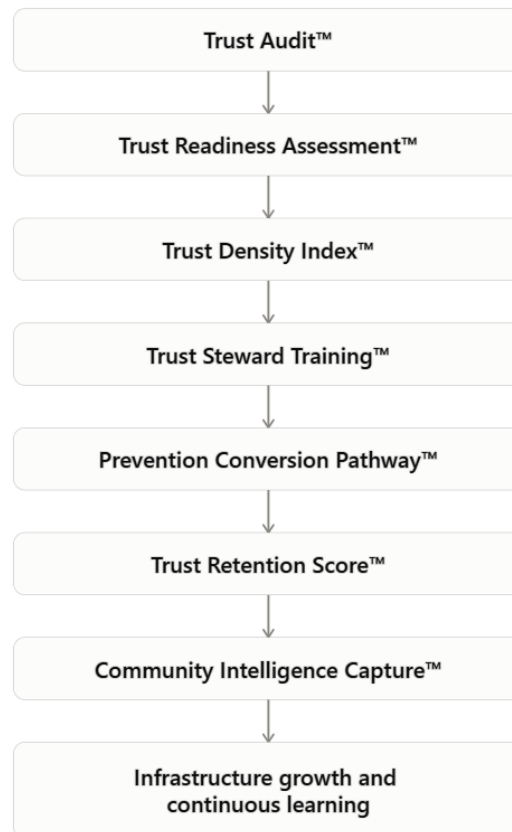
Purpose

The Human Connection Infrastructure Operating System for Prevention™ (HCI-OS™) provides the integrated operational framework through which the evidence and intelligence systems of the Jollof Nights™ Methodology function as a coordinated whole.

Operational Function

The operating system connects each operational tool into a continuous cycle of trust identification, implementation, measurement, learning, and infrastructure development.

System Flow



The operating system enables each component to inform the next while supporting continuous improvement across the wider Human Connection Infrastructure For Prevention™.

Methodological Contribution

HCI-OS™ provides the operational architecture that connects individual tools into a coherent implementation system. It enables trust-led prevention to be delivered consistently, evaluated systematically, and strengthened through continuous organisational learning.

E.10 Session Evidence Record™ (SER™)

Purpose

The Session Evidence Record™ (SER™) creates a permanent, structured evidence record for every completed Jollof Nights™ session.

Operational Function

Each Session Evidence Record™ captures the core operational evidence generated during delivery, providing a consistent evidence base for learning, quality assurance, reporting, and evaluation.

A Session Evidence Record™ may include:

- Session information
- Attendance
- Topic selection
- Participant feedback
- Facilitator reflections
- Prevention activities
- Community learning
- Supporting media where appropriate
- Operational observations

The record forms part of the evidence architecture of Jollof Nights Connect™ and supports longitudinal learning across multiple delivery settings.

Methodological Contribution

SER™ strengthens methodological consistency by ensuring that evidence generated through community delivery is captured in a structured and repeatable manner. It supports accountability, organisational learning, future research, and continuous refinement of the methodology.

E.11 Trust Steward Portal™

Purpose

The Trust Steward Portal™ provides the operational workspace through which Trust Stewards™ document learning, record reflections, access resources, and contribute to continuous methodological development.

Operational Function

The portal supports day-to-day implementation by enabling Trust Stewards™ to:

- Record structured reflections
- Submit Session Evidence Records™
- Share operational learning
- Access guidance and resources
- Receive ongoing support
- Participate in continuous professional development

The portal also supports quality assurance, organisational learning, and methodological consistency across the wider Trust Steward network.

Methodological Contribution

The Trust Steward Portal™ provides the operational continuity layer of the methodology. It enables learning generated through individual sessions to contribute to wider organisational development while strengthening consistency, governance, and long-term stewardship across the Human Connection Infrastructure For Prevention™.

E.12 Conclusion

The operational evidence and intelligence systems presented throughout this appendix provide the implementation architecture of the Jollof Nights™ Methodology. Together, they enable trust to be identified, assessed, activated, strengthened, measured, retained, coordinated, evaluated, and translated into practical prevention outcomes.

Each system performs a distinct operational function while contributing to a single integrated Human Connection Infrastructure For Prevention™. Working together, they support implementation, quality assurance, evidence generation, organisational learning, and continuous methodological refinement.

Collectively, these systems form part of the protected intellectual property, operational architecture, and commercial infrastructure of the Jollof Nights™ Methodology and Jollof Nights Connect™. They ensure that trust-led prevention can be implemented consistently, evaluated systematically, and expanded responsibly while preserving methodological integrity across different communities, organisations, and prevention settings.

Acknowledgements

The development of the Jollof Nights™ Methodology has been shaped by the trust, participation, encouragement, and support of hundreds of individuals, communities, organisations, and partners who have contributed to this work since its origins in 2018.

This methodology would not exist without the people who were willing to participate, share their experiences, challenge assumptions, contribute ideas, and join a collective journey of learning. It reflects years of community practice, relationship-building, observation, refinement, and shared commitment to the belief that prevention begins with trusted human connection.

First and foremost, we acknowledge the men who participated in the earliest conversations within Headlinerz Barbershop and helped create what would later become **Thursday Night Jollof with Jesse d Barber™**, before evolving into **Jollof Nights™**. Their honesty, vulnerability, courage, humour, wisdom, and willingness to trust one another transformed a simple idea into a living community of support, belonging, and learning.

We also acknowledge the clients of Headlinerz Barbershop whose everyday conversations provided many of the early observations that shaped this methodology. Their experiences revealed the importance of trust, belonging, human connection, and community as practical foundations for prevention.

As the methodology expanded beyond its original setting, several trusted community partners played an important role in demonstrating that the Trust Accumulation Model™ could operate successfully across different environments while remaining faithful to its core principles.

We gratefully acknowledge the contribution of:

- Nick's HQ Barbershop
- Consoligreat Barbershop
- Gado Hair Lounge

We also recognise the leadership and commitment of Nick, Founder of Nick's HQ Barbershop; Dami, Founder of Consoligreat Barbershop; and Basil, Founder of Gado Hair Lounge. Their willingness to open their trusted spaces to the methodology demonstrated that trust could be activated beyond a single venue while preserving methodological consistency across different communities.

We acknowledge the University of Greenwich for providing opportunities to explore and apply elements of the methodology within a higher education environment, recognising the importance of trusted human connection in supporting student and community wellbeing.

We are grateful to Groundwork London, the Healthier Greenwich Communities Fund, and the Royal Borough of Greenwich for their support in enabling the expansion and

practical development of the methodology across multiple trusted community settings. Their investment helped support the transition from a single-community initiative to an emerging Human Connection Infrastructure For Prevention™.

We extend our sincere appreciation to Loretta Awuah for her support during a pivotal stage in the evolution of this work. While Jollof Nights™ originated through Headlinerz Barbershop, Loretta played an instrumental role during its transition into Ndukauba Ltd, helping establish the organisation's foundation for public funding and co-authoring the first successful Healthier Greenwich Communities Fund application. Her belief in the vision and strategic contribution helped strengthen the pathway from grassroots community practice to structured public delivery.

We gratefully acknowledge Gary Parker and CNT Associates for their encouragement, partnership, and continued belief in the vision underpinning Jollof Nights™, Jollof Nights Connect™, and the Human Connection Infrastructure For Prevention™. Their support has helped create opportunities for innovation, collaboration, and the continued development of community-led approaches to prevention, wellbeing, and social impact.

We also acknowledge Sir Richard Douglas CB, Chair of the NHS South East London Integrated Care Board, for his encouragement, guidance, and endorsement of the work of Ndukauba Ltd, Thursday Night Jollof with Jesse d Barber™, Jollof Nights™, and the emerging Jollof Nights Connect™ Human Connection Infrastructure For Prevention™. His recognition of the methodology as a community-rooted, culturally informed, and prevention-focused approach has provided important encouragement throughout its development.

We acknowledge Oxleas NHS Foundation Trust for its partnership, collaboration, and commitment to exploring community-led approaches to prevention, health equity, and wellbeing. In particular, we recognise Iain Dimond, Chief Operating Officer, for acknowledging the contribution of Headlinerz Barbershop and Ndukauba Ltd in addressing health inequalities and demonstrating the value of integrated, community-led care. We also thank the many Oxleas colleagues who have supported the methodology through partnership, participation, learning, and collaborative working.

Our sincere appreciation extends to the entire Headlinerz Barbershop team, whose daily commitment to service, relationship-building, and community created the trusted environment from which this methodology emerged.

We also recognise the many clients, friends, supporters, volunteers, and members of the wider Headlinerz family whose encouragement, practical support, generosity, and belief sustained the work during its earliest years. Long before grants, institutional partnerships, or formal recognition, it was the goodwill of ordinary people who shared conversations, volunteered their time, contributed resources, prepared meals, invested financially, and believed in the vision that enabled this work to continue.

Many of these contributions were made quietly and without expectation of recognition. Their trust, loyalty, and commitment helped transform an idea into a

growing movement and laid the foundations upon which Jollof Nights™, Jollof Nights Connect™, and the Human Connection Infrastructure For Prevention™ continue to develop.

We acknowledge the Directors of Ndukauba Ltd for their continued commitment to innovation, prevention, community wellbeing, and long-term systems change. Their belief in the vision has helped sustain and develop this work.

We also recognise the growing network of NHS partners, local authorities, universities, researchers, funders, voluntary organisations, grassroots leaders, and community partners who continue to explore the role of trusted human connection in prevention, health creation, wellbeing, and community resilience.

Special thanks are due to Professor Tony Young, whose recommendation of *A General Theory of Love* encouraged us to explore the neuroscientific literature that helped explain many of the relational patterns already observed through practice.

We also acknowledge the wider scientific community whose work has provided important theoretical perspectives that complement the practical observations presented throughout this publication. In particular, we recognise Thomas Lewis, Fari Amini, and Richard Lannon, whose work in *A General Theory of Love* offered a valuable neuroscientific framework through which many of the methodology's observations could be better understood.

Finally, we acknowledge the countless individuals, families, communities, organisations, and future partners who continue to demonstrate that trust, belonging, dignity, and human connection remain powerful foundations for prevention and positive social change.

The Jollof Nights™ Methodology is ultimately a reflection of relationships built over time. It emerged through community practice, grew through shared learning, and continues to evolve through the trust, generosity, and commitment of the many people acknowledged throughout this publication. To all those who have contributed to this journey, whether publicly recognised or quietly present in the background, we extend our sincere gratitude.

Suggested Citation

Ashiegbu, J. (2026). *The Jollof Nights™ Methodology: A Trust-Led Human Connection Approach to Prevention. First Edition.* London: Ndukauba Ltd.

References

Antonovsky, A. (1979). *Health, Stress and Coping.* San Francisco, CA: Jossey-Bass.

Bowlby, J. (1969). *Attachment and Loss. Volume I: Attachment.* New York: Basic Books.

Edmondson, A. C. (1999). 'Psychological Safety and Learning Behavior in Work Teams', *Administrative Science Quarterly*, **44**(2), pp. 350–383.

Lewis, T., Amini, F. and Lannon, R. (2000). *A General Theory of Love.* New York: Random House.

McMillan, D. W. and Chavis, D. M. (1986). 'Sense of Community: A Definition and Theory', *Journal of Community Psychology*, **14**(1), pp. 6–23.

Putnam, R. D. (2000). *Bowling Alone: The Collapse and Revival of American Community.* New York: Simon & Schuster.

Author's Closing Statement

The Jollof Nights™ Methodology began as an attempt to bring people back together. It did not begin as a health intervention, a prevention programme, or even as a methodology. It began with a simple observation that people were becoming increasingly disconnected from one another despite living, working, worshipping, and socialising within the same communities. Many were carrying significant emotional, social, financial, family, and health burdens, yet many lacked trusted environments in which those burdens could be shared.

What followed was a journey of observation, experimentation, learning, and practice. Through trusted conversations, shared experiences, and repeated human connection, we began to observe patterns that gradually became impossible to ignore. Trust was creating opportunities that information alone often could not. It appeared to encourage participation, create space for honest conversation, support earlier disclosure, and make people more willing to take action before challenges became crises.

Over time, those observations evolved into the Trust Accumulation Model™. They informed the continued development of Jollof Nights™, later Jollof Nights Connect™, and ultimately the proposition presented throughout this publication: that trusted human connection can function as a Human Connection Infrastructure For Prevention™.

Throughout this journey, one observation has remained remarkably consistent. People appear more willing to engage when they trust, more willing to speak when they experience belonging, more willing to act when they feel supported, and more willing to seek help when trusted relationships make that possible. While these observations require continued research, testing, and refinement, they have remained sufficiently consistent throughout our work to justify the development of this methodology.

This publication does not suggest that trust alone resolves complex health, social, or economic challenges. Rather, it proposes that trust creates conditions in which earlier engagement, earlier disclosure, earlier action, and more effective prevention become increasingly possible. If prevention is ultimately about helping people act before challenges escalate, then trusted human connection deserves greater recognition as a strategic community asset.

The future of prevention will undoubtedly involve new technologies, new treatments, new services, and new innovations. It may also require us to recognise something that has always existed within communities but has often been overlooked as a strategic resource. That resource is trust.

The Jollof Nights™ Methodology represents our contribution to that continuing conversation. It documents one community's experience of observing, understanding, organising, and activating trusted human connection for prevention, while inviting others to test, challenge, refine, and build upon the ideas presented here. Whether future evidence strengthens, reshapes, or extends this work, we hope

it encourages greater recognition of the role that trusted human connection can play in helping people remain well, strengthening communities, and supporting prevention long before crisis occurs.

Jesse Ashiegbu (Jesse d Barber)

Founder, Headlinerz Barbershop Ltd

Founder, Jollof Nights™

Founder, Jollof Nights Connect™

Founder, Ndukauba Ltd

Founder, Chifa Lab Ltd

